

user manual

BX-Y2L media player



Version : V1.2 Release Date : 2019.11.22

Statement

Any companies or privates cannot copy, transcribe or translate part or whole content of this file without our written permission. And cannot use it on any business or benefit filed with any forms.

The specifications and information which are mentioned on the file is for reference only, if there's update, we will not inform you. This file is only for guidance, and all information will not be for any promises.

CATALOG

Summary.....	5
Interface specification.....	6
BX-Y2L interface specification.....	6
Hardware connection diagram.....	7
Using steps.....	8
Add screen.....	8
Controller IP setting.....	10
WIFI SETTING.....	15
Scan Configuration.....	18
Connection configuration.....	25
Reset screen parameter.....	26
MAC setting.....	27
Controller connect to the wireless router.....	28
WEB server communication.....	31
ADD PROGRAM STEPS.....	36
Add program.....	36
Add picture zone.....	37
Finish edit program.....	38
Play program.....	38
AREA EDIT USER MANUAL.....	38

Play subtitle.....	38
Play video.....	39
TIME.....	40
Weather zone.....	41
Database.....	43
Firmware maintenance.....	49
Common functions.....	52
Time correction.....	52
Brightness.....	52
Volume.....	55
Advanced.....	57
Bulletin management.....	57
Start Logo configuration.....	58
Screen debug.....	59
Set IP display flag.....	59
Network time server.....	60
Set APN.....	60
Multi function card configuration.....	61
Hardware connection.....	62
Relay function.....	64

Brief Introduction

Thanks for ordering LED control card. The design of the control card is according to the international and industrial standard, but if the operations are incorrect, it will probably bring you personal injury and financial harm. As to avoid these and win more from your equipment, please obey the specifications of this file.

Summary

BX-Y2L performance is more stable ,easy to operate by network control ,cluster sending and cloud management.Flexible control size ,support super length 8192.Total pixels $\leq 600K$: 1024*600; (W \leq 8192, H \leq 2048)

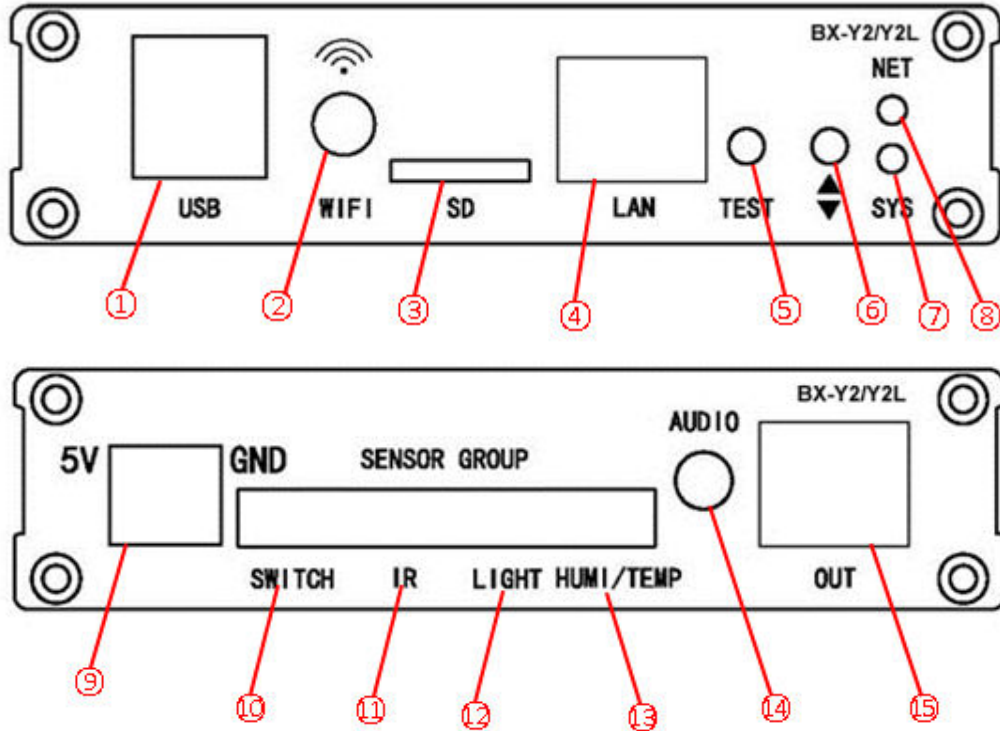
Storage is 4GB FLASH, SD card extend to 256GB is optional.

- (1) The second protocol platform ,easy to make secondary development for customized projects.
- (2) Y2L/Y2/Y3 is mainly for super length full color screens;
- (3) Control the screen resolution can be more than 4096;
- (4) Several kinds of sensor and relay on board;
- (5) Support environmental monitoring sensors;
- (6) Support BX-VMF;
- (7) Support China and overseas weather report;
- (7) Support GPS, display the real time tracking on the bus screens;
- (8) Support program self-adaption;
- (9) Support program background music;
- (10) Support dynamic area;
- (11) Support screen rotation;
- (12) Support video area copy;
- (13) Support playback;
- (14) Support parameters setup save and readback;
- (15) Support arbitrary typesetting rules in Mongolian, Hebrew, Arabic, etc, easy to make vertical font
- (16) Support firmware and FPGA update online,cost efficient

Interface specification

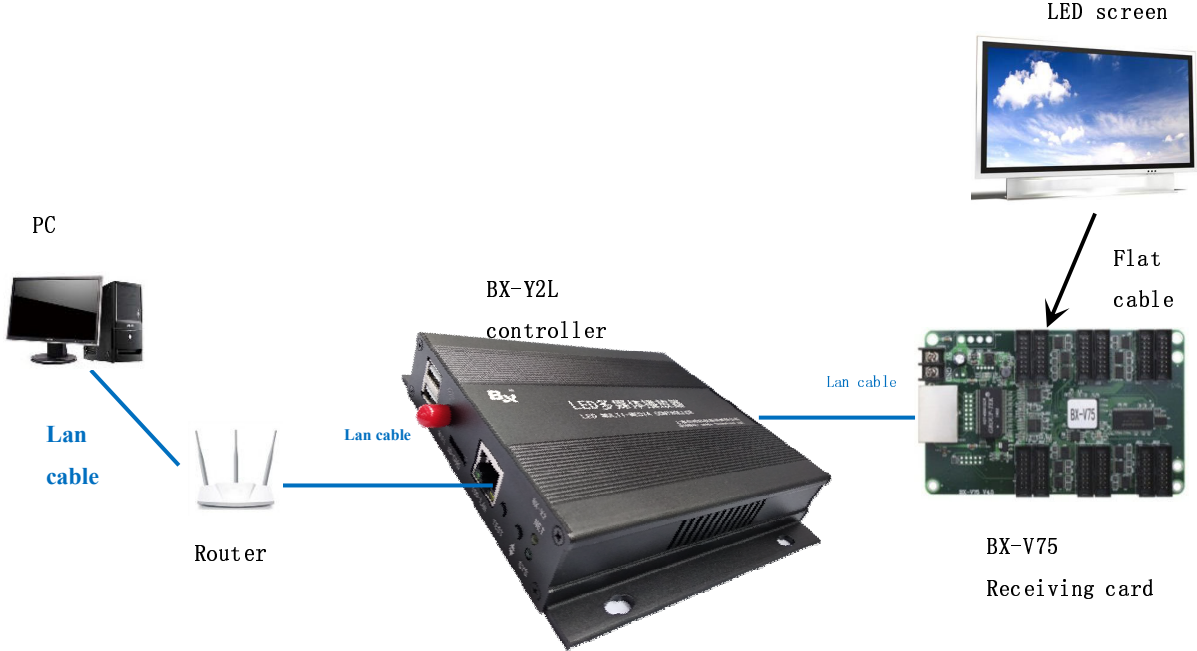
BX-Y2L interface specification

BX-Y2L supports the external WiFi module and one channel of audio output.



Item	Interface	specification
①	USB	USB port ,support independent WIFI module 4G routers
②	WIFI	Connect with 2.4GHz WIFI antenna
③	SD	SD card,extend slot
④	LAN	100M Ethernet port connect to PC
⑤	TEST	TEST BUTTON
⑥	θ	Move down,Interactive menu focus down
⑦	π	Move up,Interactive menu focus down
⑧	NET	network indication
⑨	5V	5V power terminal, dc voltage input, rated 5V, support 4V -6V
⑩	SWITCH	Relay switch port
⑪	IR	XH254-3P infrared receive port
⑫	LIGHT	Brightness sensor port
⑬	HUMI/TEMP	Humidity /temp sensor port
⑭	AUDIO	Audio output port
⑮	OUT	Scan data output network port, connect the full color receiving card

Hardware connection diagram



Using steps

The steps of using the controller described in this document are only the fastest for users to understand and use the controller, and the functions of the controller are not described one by one. For more functions, please refer to LedshowYQ 2018 software user manual.

Add screen

1. Open "LedshowYQ 2018" software , click set screen parameters in setup menu, enter password "168" , then enter into parameter setting interface , Click **Find** , add screen.

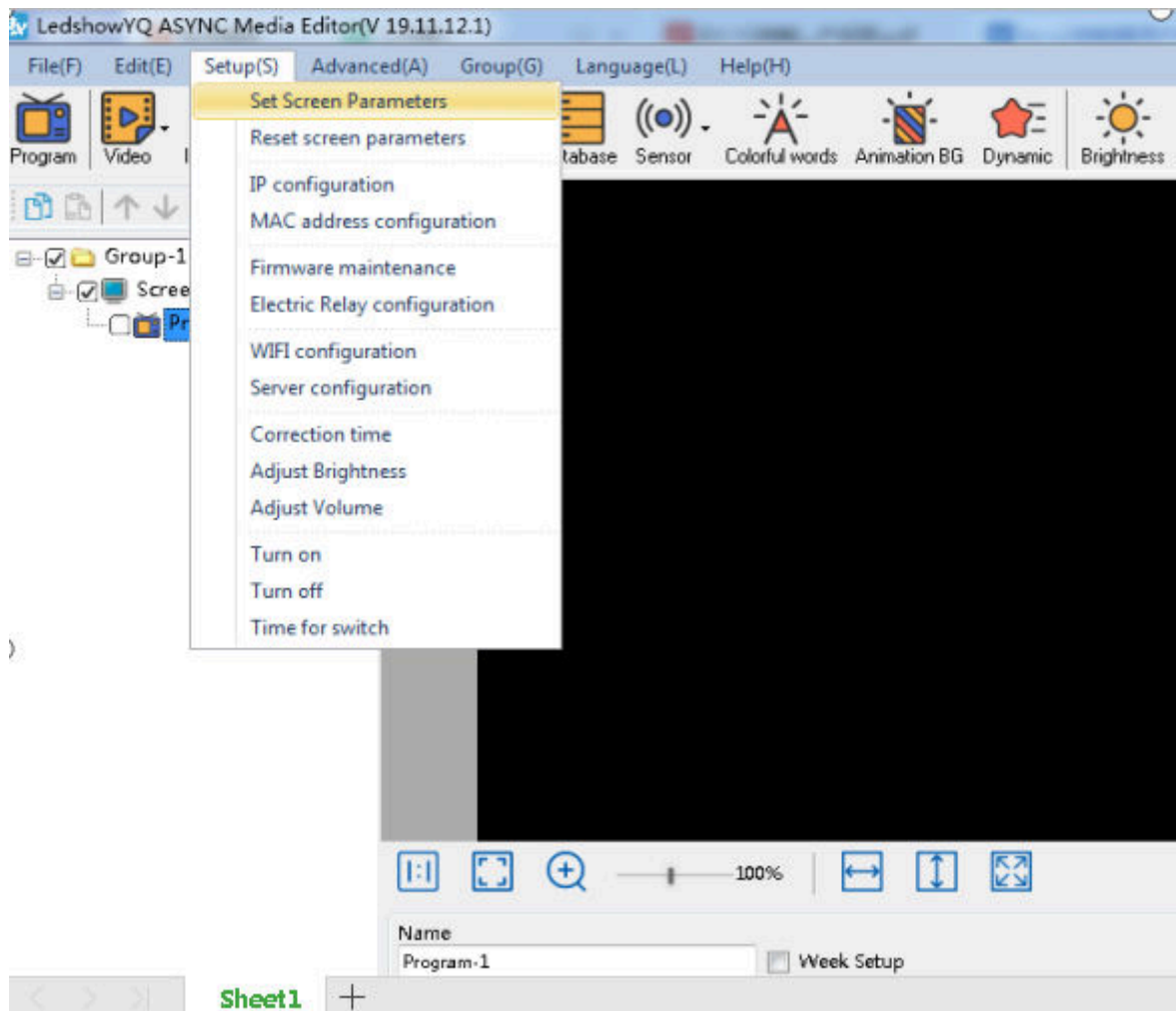



Image 1

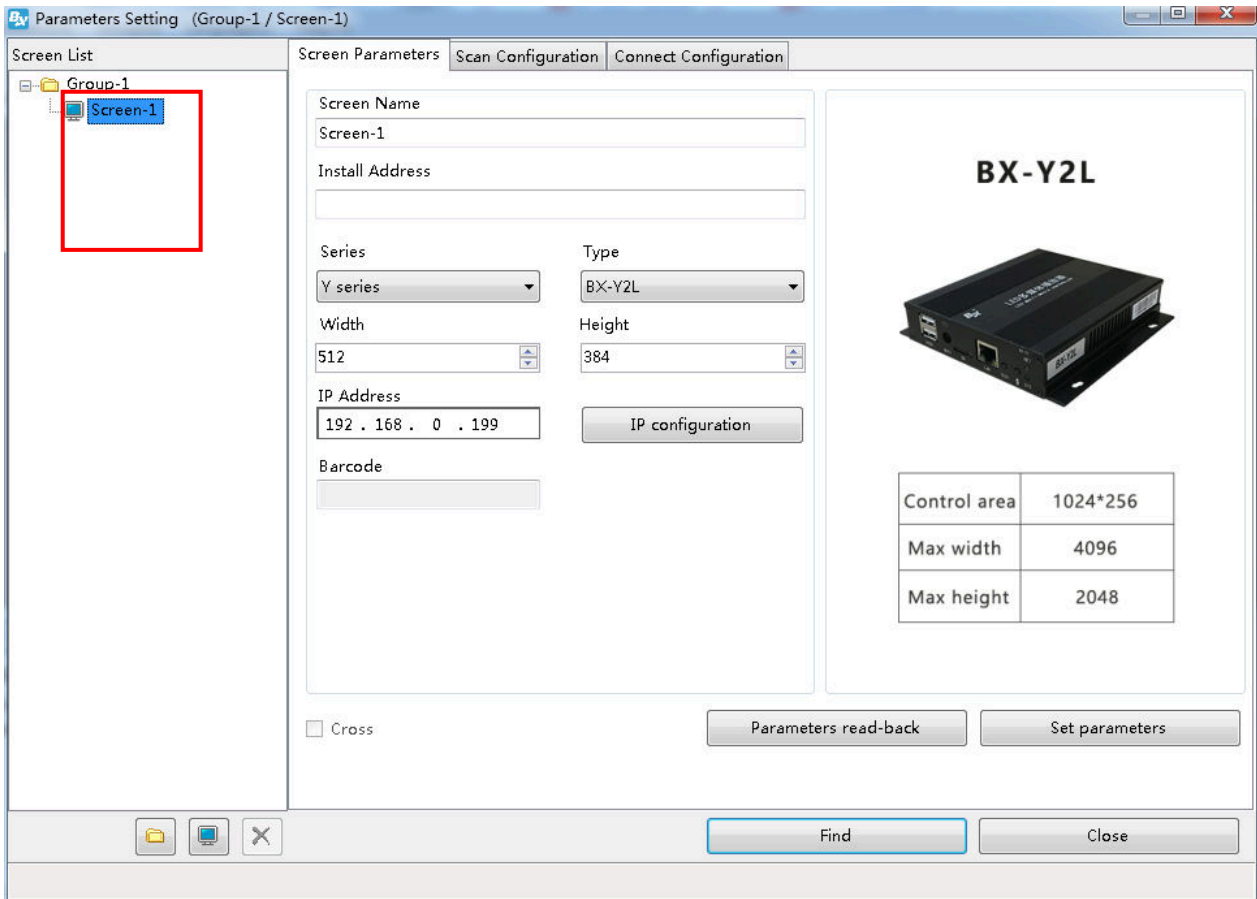


图 2

2. In add screen interface ,Click  button on the back of "online card list" ,then choice the online controller to banned it to the screen ,then click add button.



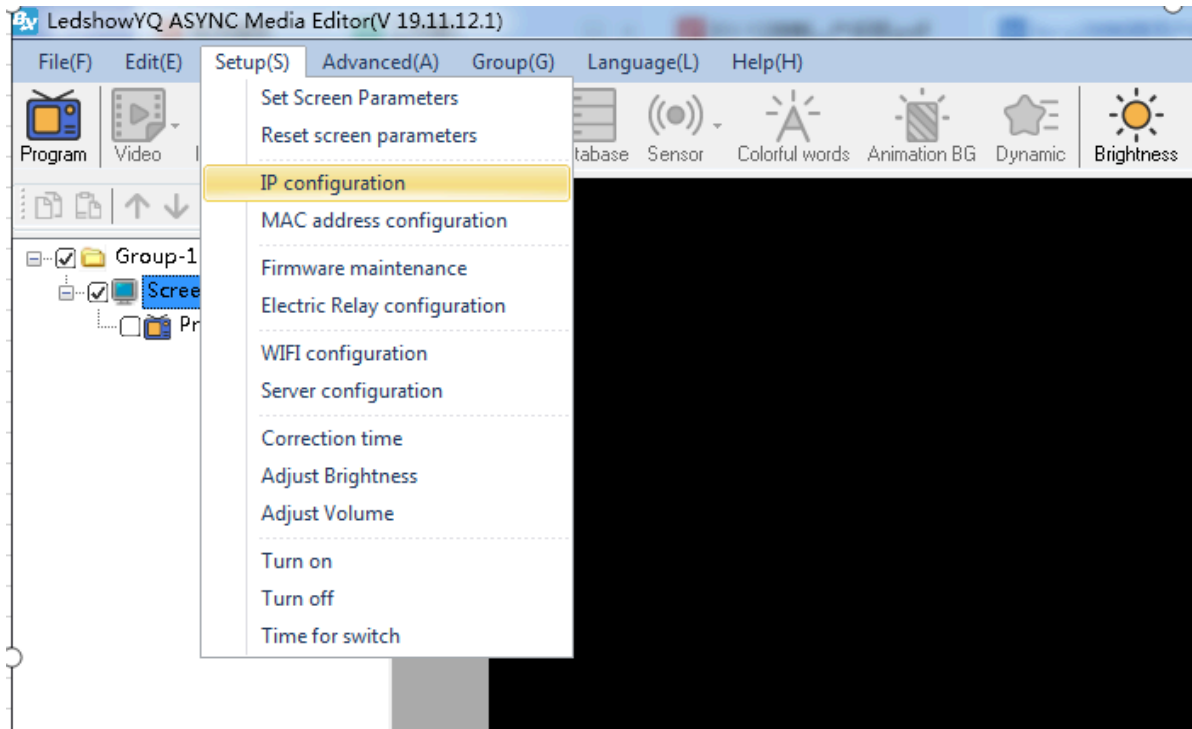
In the add screen interface, check "add all screens" to add all online controllers. As shown below the figure below



Controller IP setting

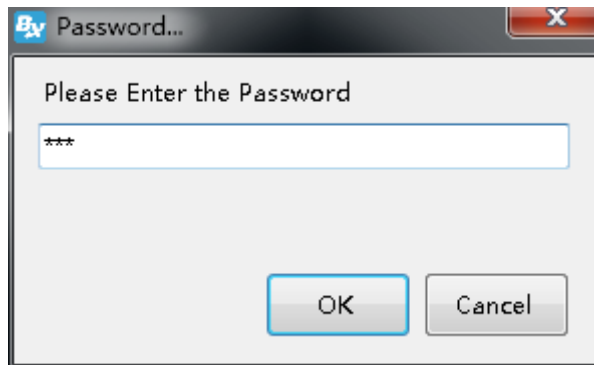
Step 1

Click the "controller IP configuration" option under the "Settings" menu, as shown in the following images:



Step 2

Enter password "168" press OK



Step 3

In the "controller list" drop-down list under the "controller IP configuration" interface, users can see all the controllers that have been online. Click to select the controller that needs to modify the IP, then select the IP acquisition method, and then click the "Settings" button, so that the IP of the online controller can be successfully modified, as shown in the following image:

IP configuration

Online card list

COY200190039 192.168.0.188

Automatically obtain IP address

Use the following IP address :

IP Address: 192 . 192 . 192 . 192

Subnet Mask: 192 . 192 . 192 . 192

Gateway: 192 . 192 . 192 . 192

DNS: 192 . 192 . 192 . 192

Port: 5005

Install Address:

iLEDCloud

China International

Server IP Address: 139 . 196 . 231 . 196

Server Port: 3800

FTP server IP address: 139 . 196 . 231 . 196

FTP server port: 2121

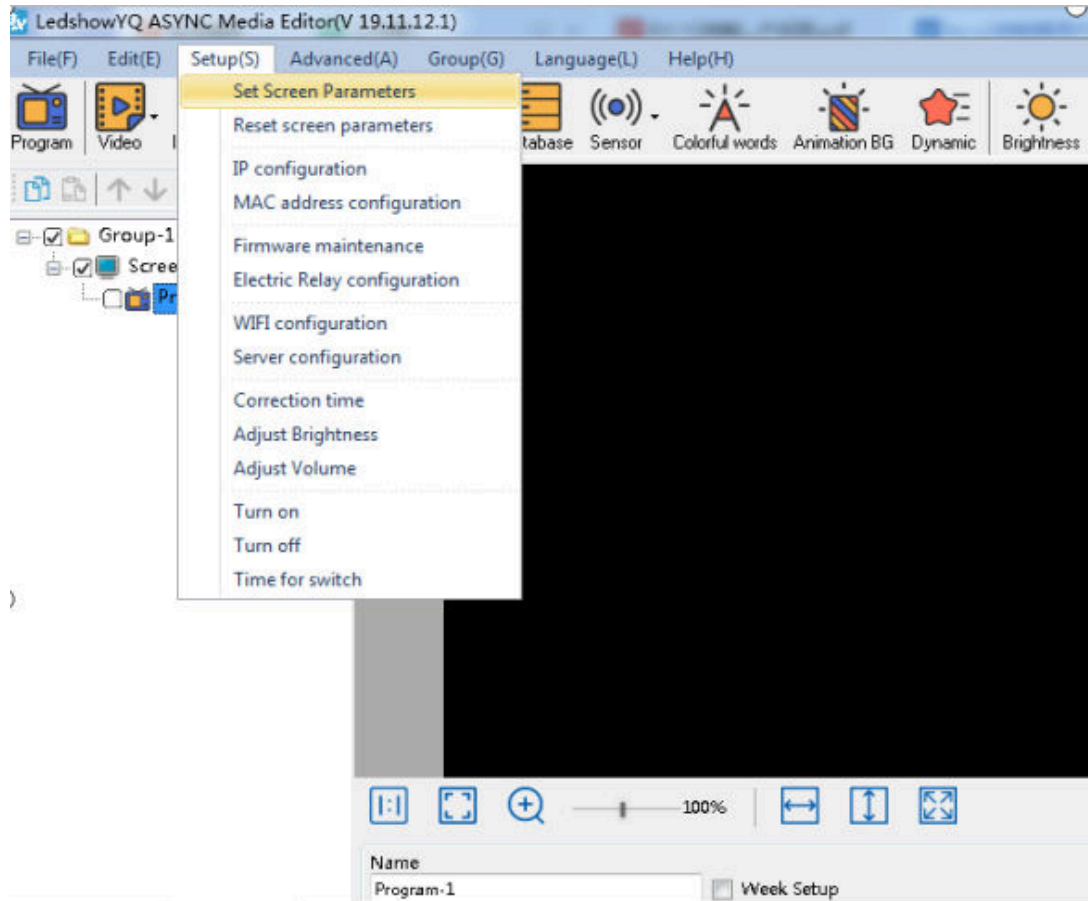
User name:

Settings Close

Setting parameter

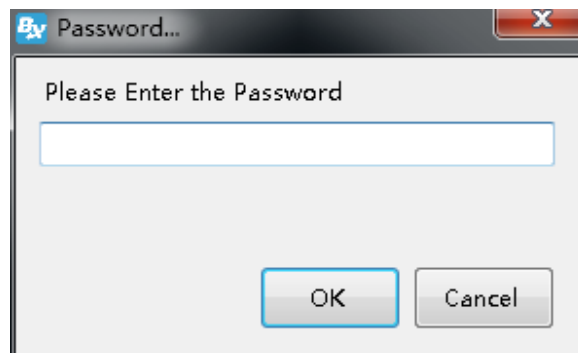
Step1

Click set screen parameter in setup menu.



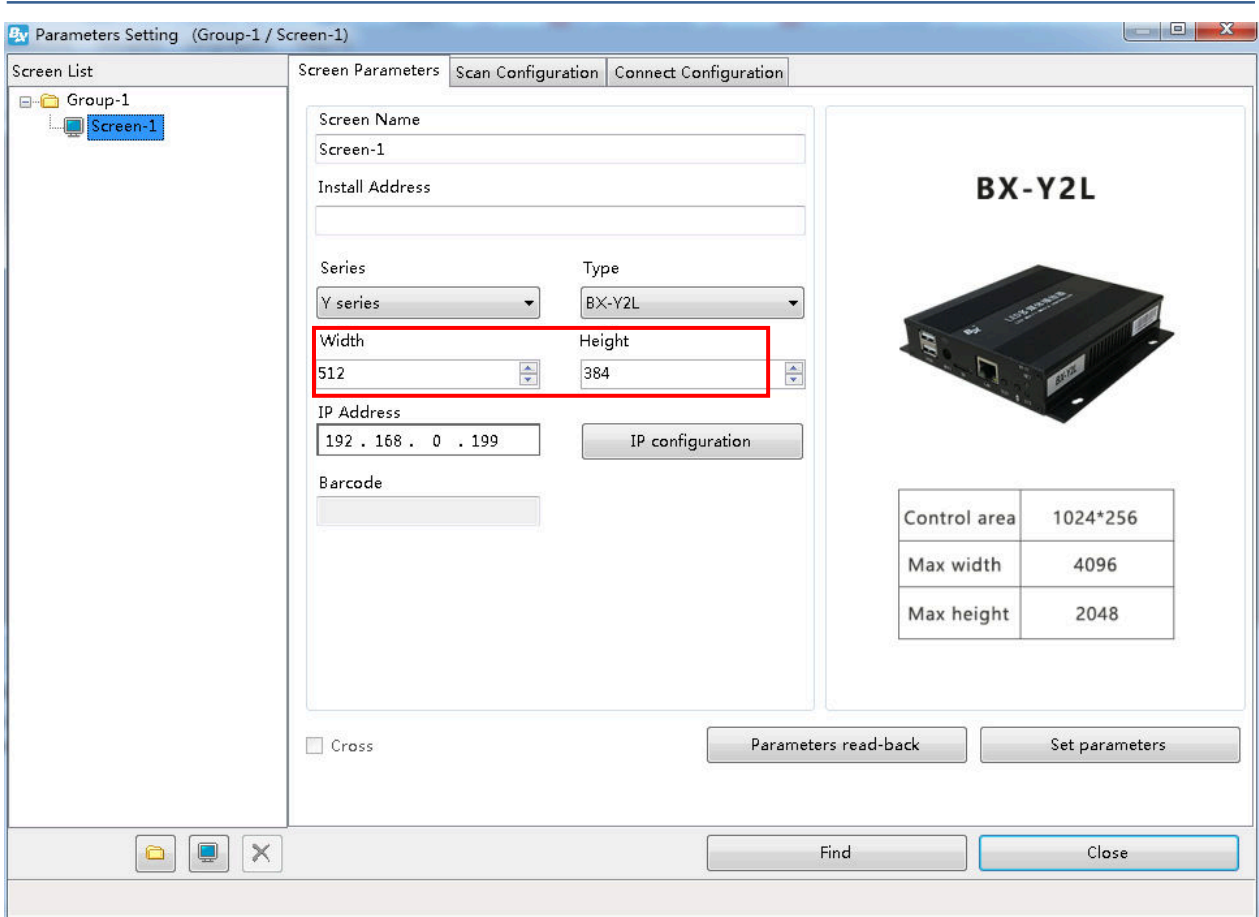
Step2

Enter 168 ,then click OK button



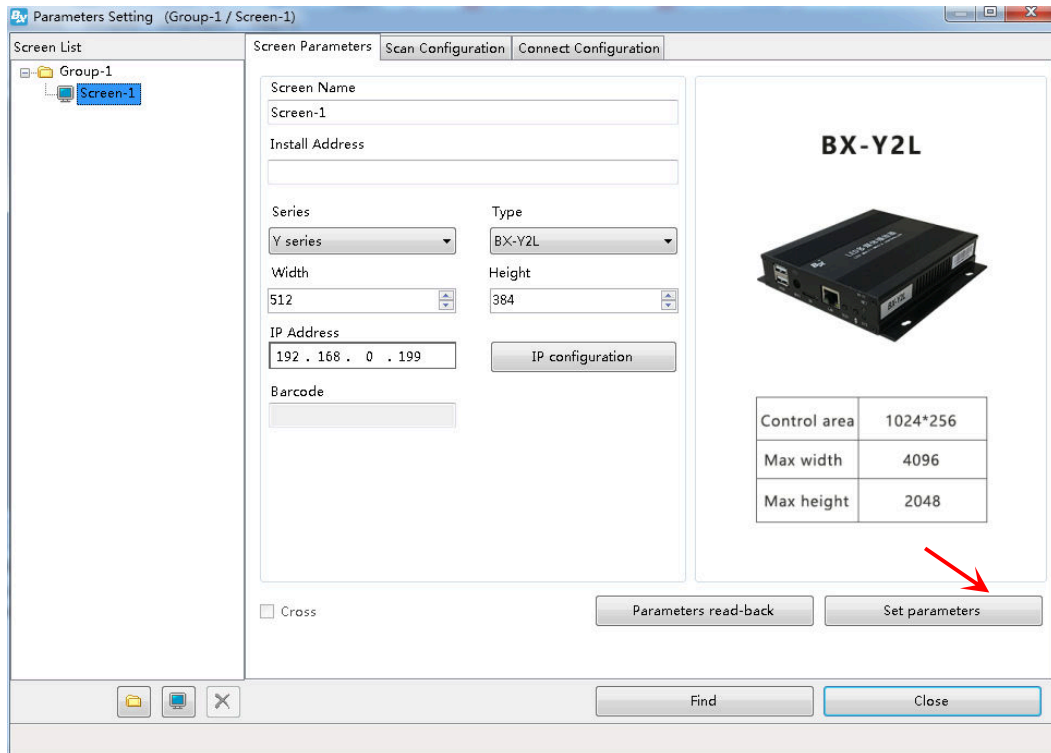
Step3

Set the width and height of the screen , as shown below



Step 4

Click "set screen parameter" to finish setting screen parameter, as shown bellow:



WIFI SETTING

There are two types of WiFi operation modes supported by Y series controller: AP mode and STA mode. No wiring is needed, so it is convenient to move to different occasions and easy to operate. (if the computer does not have a wireless network card, please use a USB wireless network card.)

AP mode(Controller as a hot spot, let the computer connect to the controller WiFi)

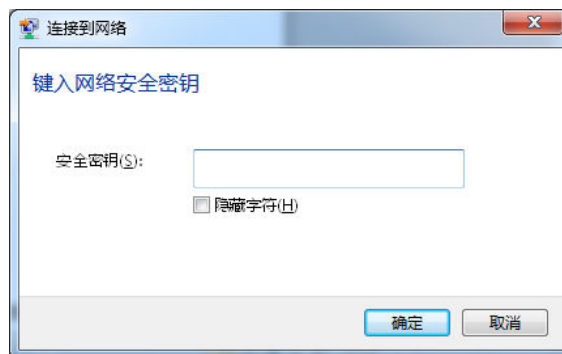
Step 1

Open the network connection of the computer, the controller hotspot name is the barcode of the controller by default, and click Connect, as shown in the following figure:



Step 2

Enter the network security key. The initial password is 8 digits after the serial number of the control card. Then click "next", and the computer will connect to the YQ controller WiFi, as shown



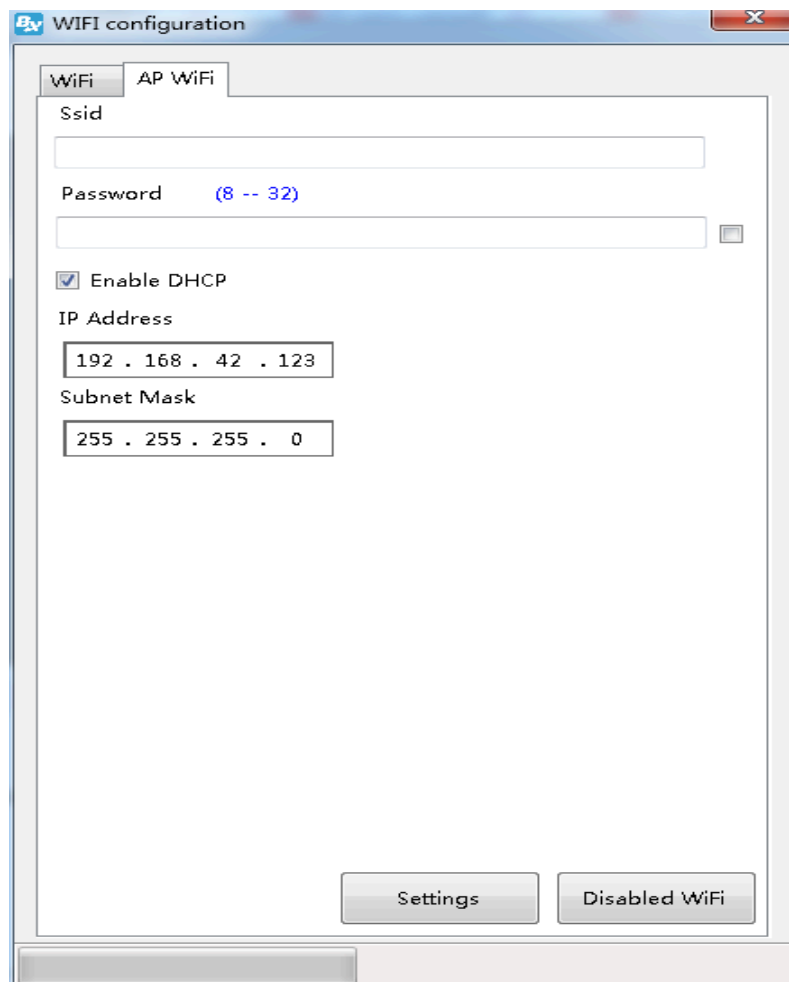
in the image:

Step 3

After the computer is successfully connected to the controller WiFi hotspot, the ledshowyq 2018 software can be opened for normal screen adding, program editing, program sending and other operations.

Step 4

Users can modify the hotspot name and password. Through "WiFi configuration" under "Settings" under the menu bar, first enter the password "168", then select the "AP WiFi" label in the pop-up dialog box, input the new WiFi name and password into the corresponding "hotspot name" and "password", the rest remain default, and finally click "Settings", then the hotspot name and password are successfully modified, as shown in the figure below. (Note: please do not set the hotspot name to Chinese, the password supports numbers, letters, and

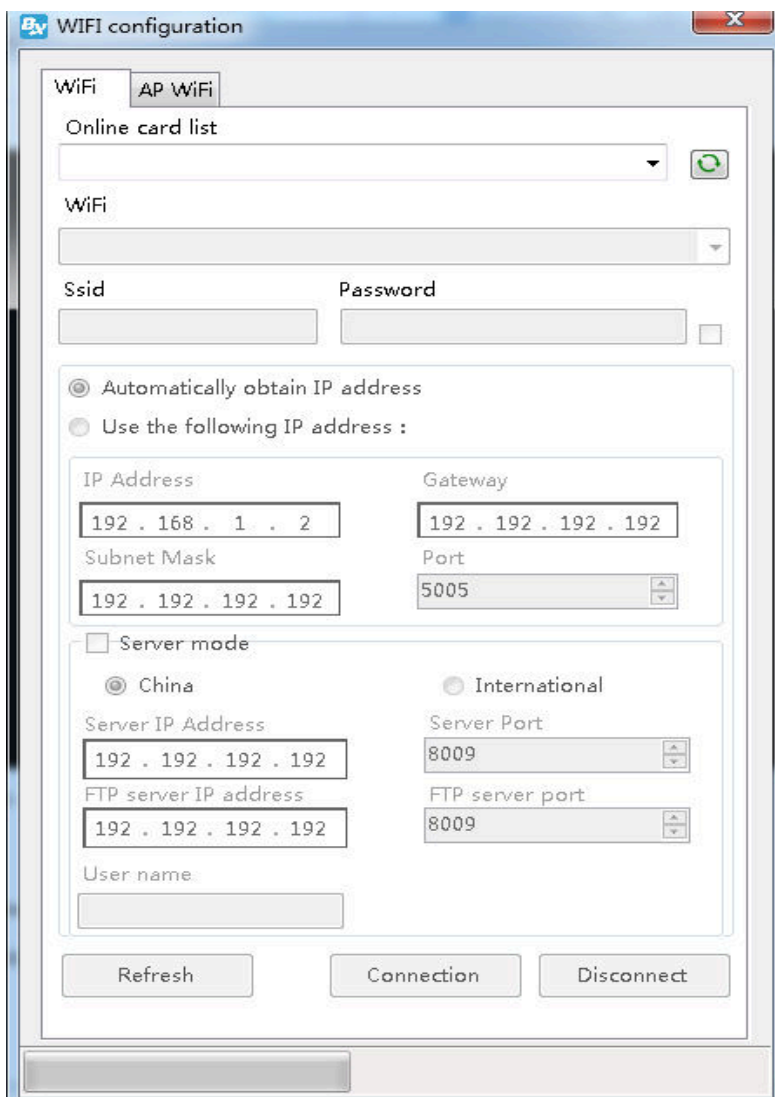


the length is 8-32 bits.)

1. STA mode (Controller connected to external WiFi network)

Step 1

Select the "WiFi" label and click the "Refresh" button in the lower left corner. After a few seconds, all the searched WiFi names will be displayed under the WiFi list. Select the WiFi name to be connected, enter the "password" of the WiFi, and then select the method of "automatically obtaining the IP address" or manually filling in the IP address. Click the "connect" button in the lower right corner of the interface to connect to the WiFi.

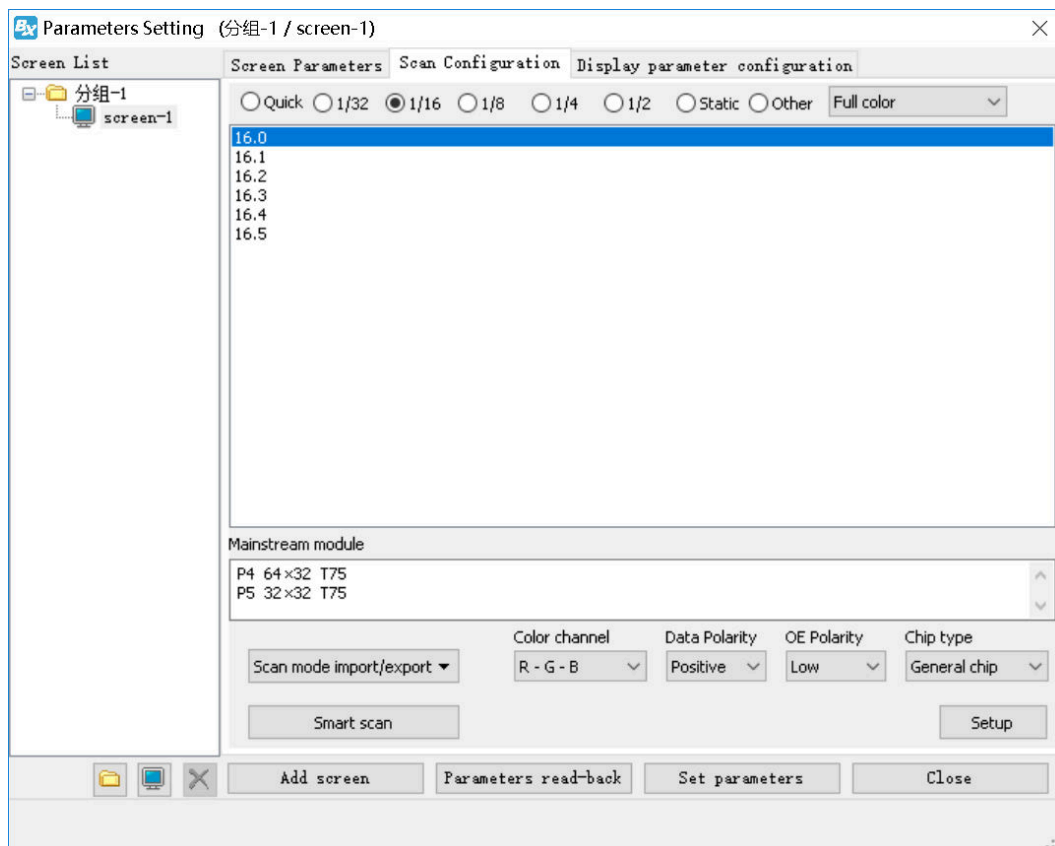


Step2

After successfully connect ,remove the YQ controller network ,connect the computer with the wireless router ,network cable connect or WIFI connect both is ok.then the LedshowYQ 2018 will communicate with the YQ controller correctly.

Scan Configuration

In the “set screen parameters” --click “scan configuration” option ,then go to the scan configuration interface,as shown in picture , user can set “scan mode” “ color channel” “ data polarity” “ OE polarity” “ chip model” “ smart scan configuration” and “scan mode export/import” .



1. Module cascade direction :

There are 4 modes of module cascade direction: From right to left ;From left to right ;From bottom to top, From top to bottom

2. Basic scan mode option:

- ◆ Scan mode : select the quick、 1/32、 1/16、 1/8、 1/4、 1/2、 static and other mode .indoor dual color usually is 1/16, indoor full color usually is 1/8 , outdoor dual color normally is 1/8,outdoor full color normally is static scan mode.
- ◆ Screen : can select the full color ,single/dual color
- ◆ Color channel : select the R-G-B、 R-B-G、 G-R-B、 G-B-R、 B-R-G、 B-G-R.
- ◆ Data polarity : positive and negative polarity, if select the negative ,the screen will display anti-white.
- ◆ OE polarity : high polarity and low polarity.
- ◆ Chip model : LED driver chip ,default is common chip,user also can select the specified chip model.

3. Smart scan configuration

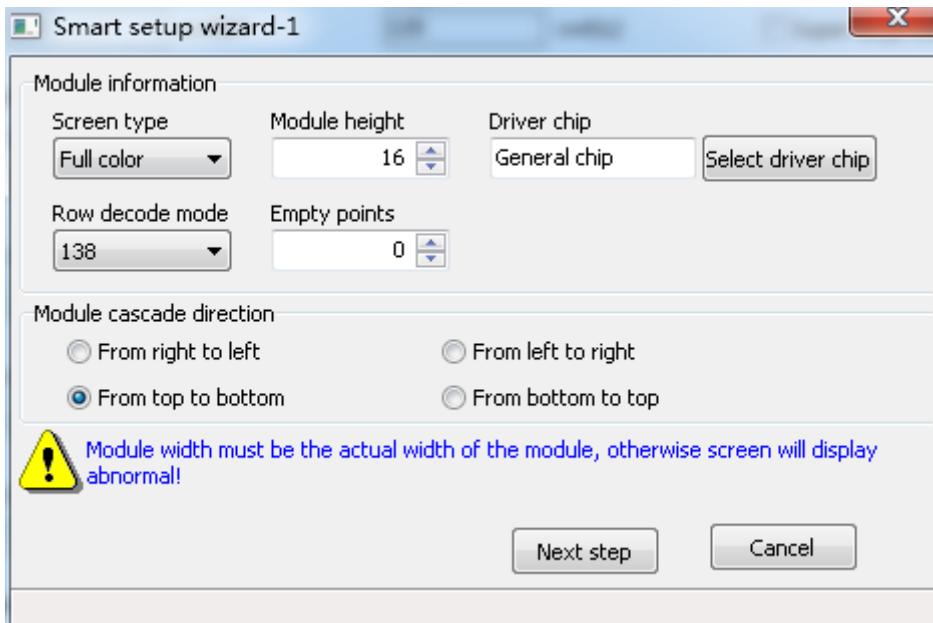
User can use smart scan configuration to set the scan mode if don' t know which one is suitable for the module.

Step 1

Click "smart scan configuration" --" smart setup wizard-1" to set the parameters.

- ◆ Screen type : single color dual color and full color
- ◆ Module width : user can input the module width according to the LED screen total pixel for one line.

- ◆ Chip type : default is general chip ,also can specified the LED screen chip.
- ◆ Row decode mode : including no decode, 138 decode,74HC595 decode and RT5958 decode , usually select138 decode.
- ◆ Empty points : when use empty points ,can input the empty points numbers.
- ◆ Module cascade direction:receiving card connection direction :from right to left ,from left to right,from top to bottom,from bottom to top.
- ◆ After setup, pls click “next step”



Step 2

In the “smart setup wizard-2”to set the parameters as shown in the picture.

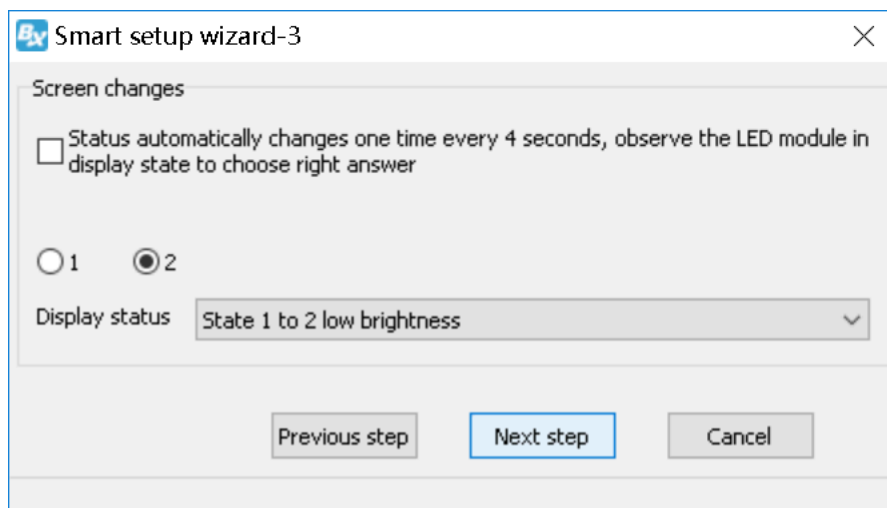


Picture 43

Click “1”,check the LED screen display black or white ,then click the “2”,then check the screen is black or white,if user want to check the screen variation ,can select the “status automatically changes one time every 4 seconds ,observe the LED module in display state to choose right answer ”then click “next step”

Step 3

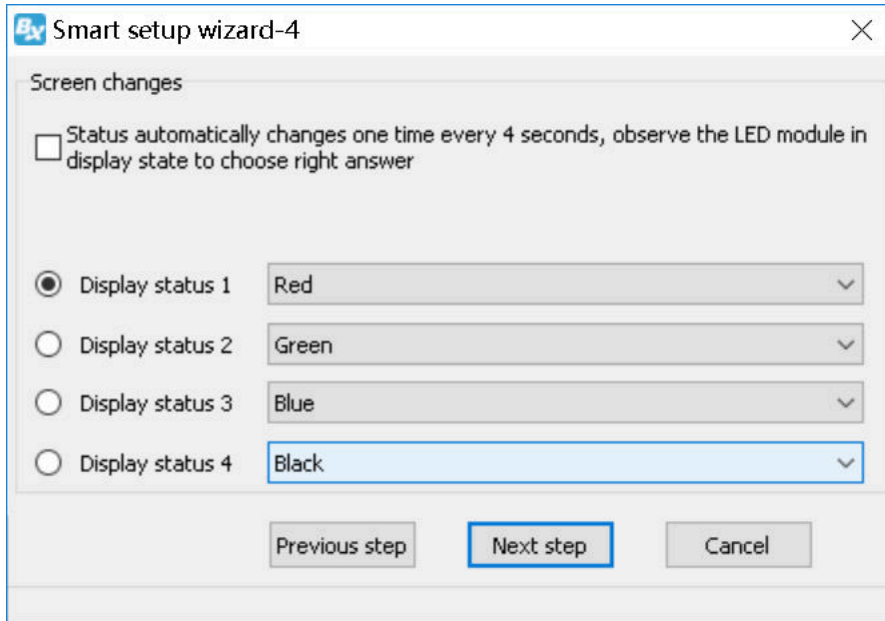
Click “1”,check the LED screen display black or white ,then click the “2”,then check the screen is black or white,if user want to check the screen variation ,can select the “staus automatically changes one time every 4 seconds ,observe the LED module in display state to choose right answer ”then click “next step”



Step 4

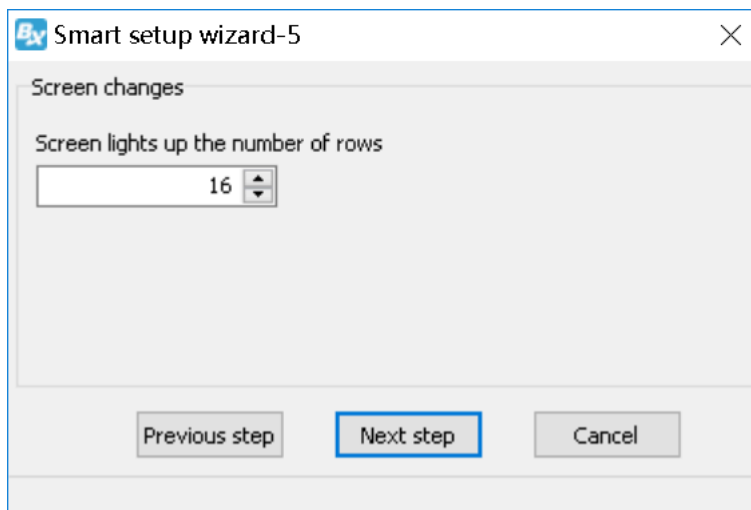
Click “1”,check the LED screen color ,then click the “2”to check the screen color,if user want to check the screen variation ,can select the “staus automatically

changes one time every 4 seconds ,observe the LED module in display state to choose right answer ”then click “next step”



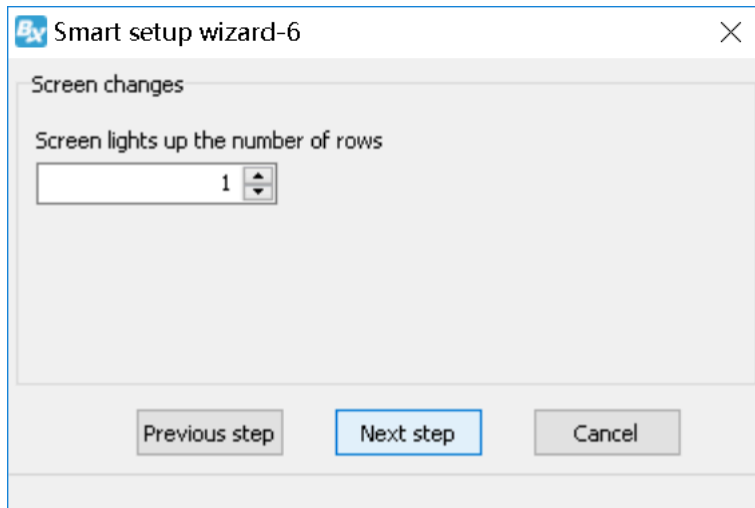
Step 5

Set the lights up number of rows ,then click the “next step”



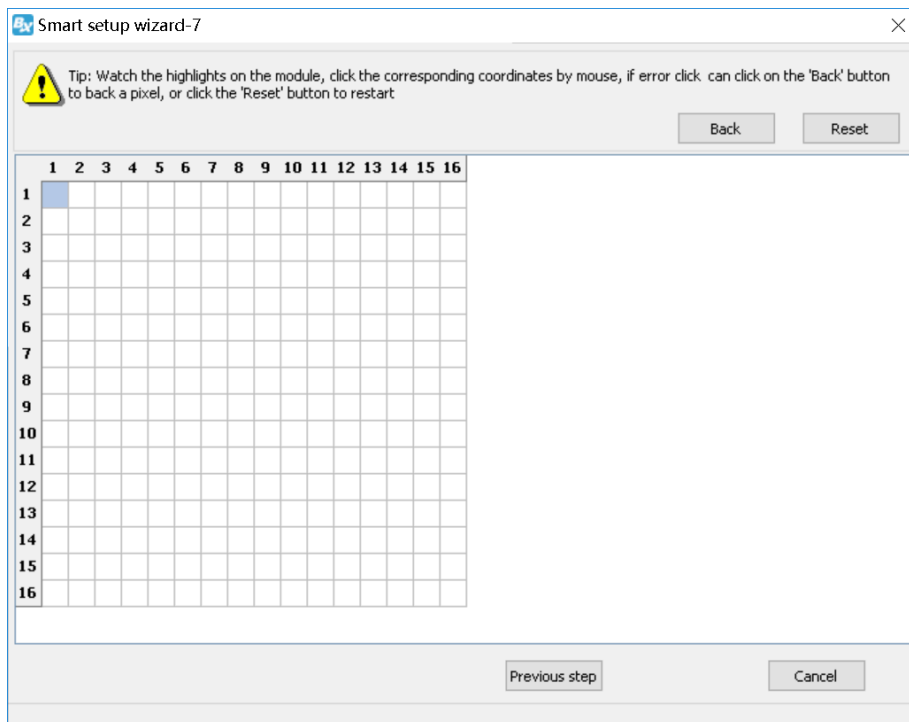
Step6

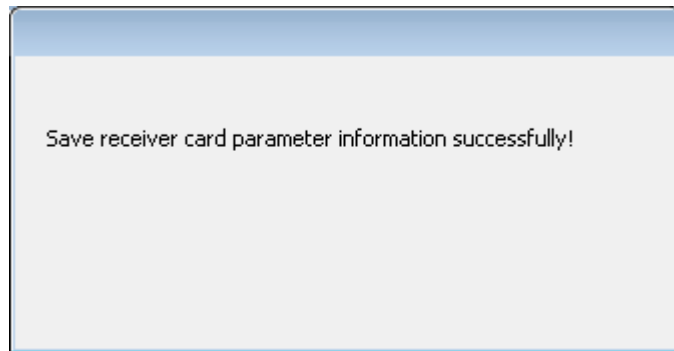
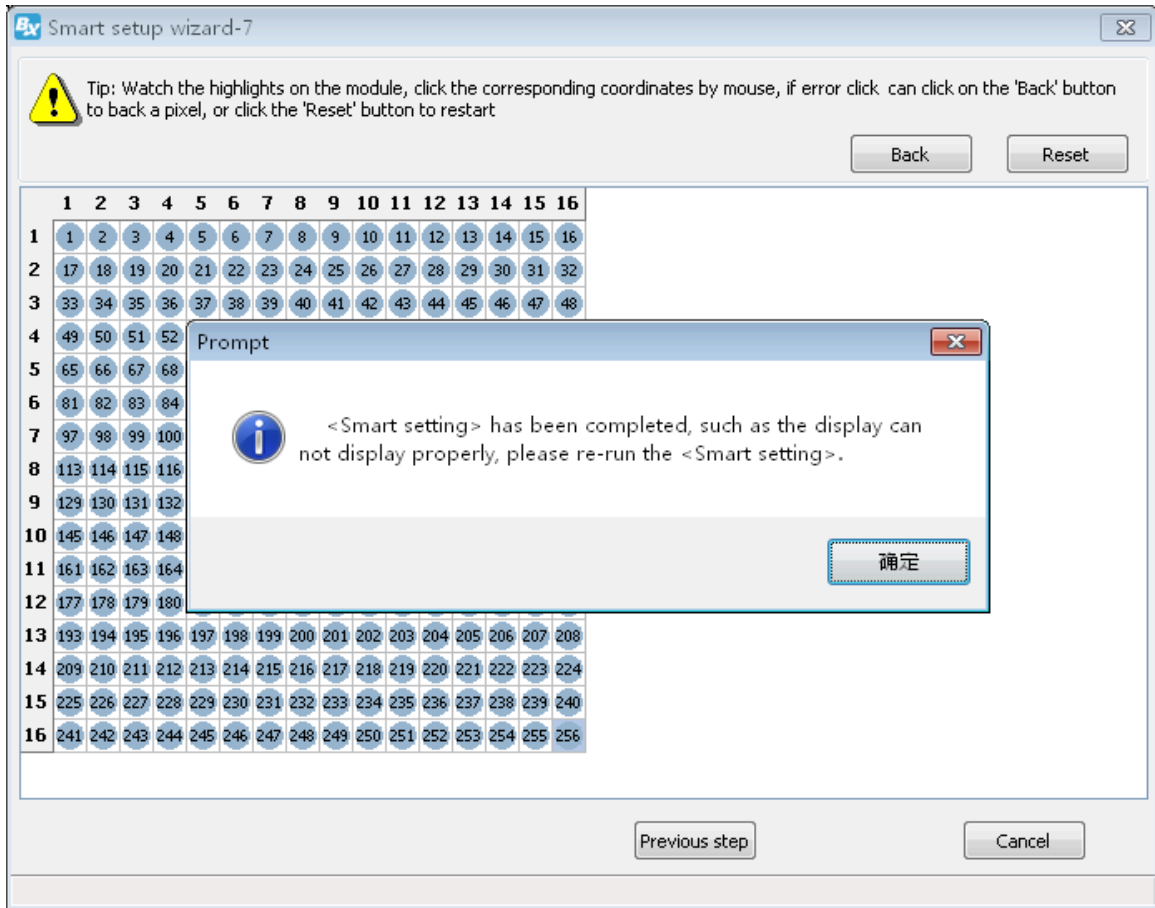
Count the LED screen lights up the number of rows ,then click “next step”



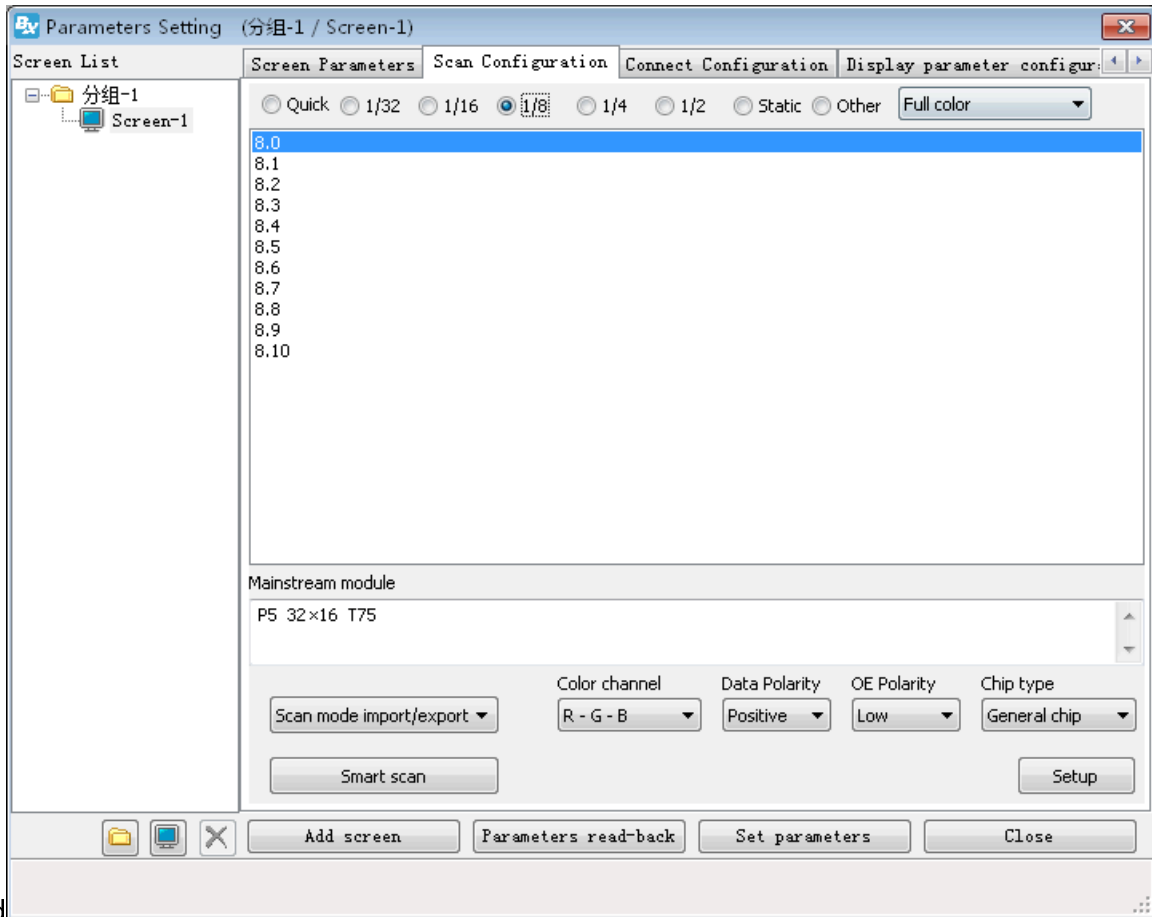
Step 7

Set the module scan mode as shown in picture 48 ,then make coordinates as shown in picture 49,click "reset" then will prompt the Picture 50.then save the scan mode .





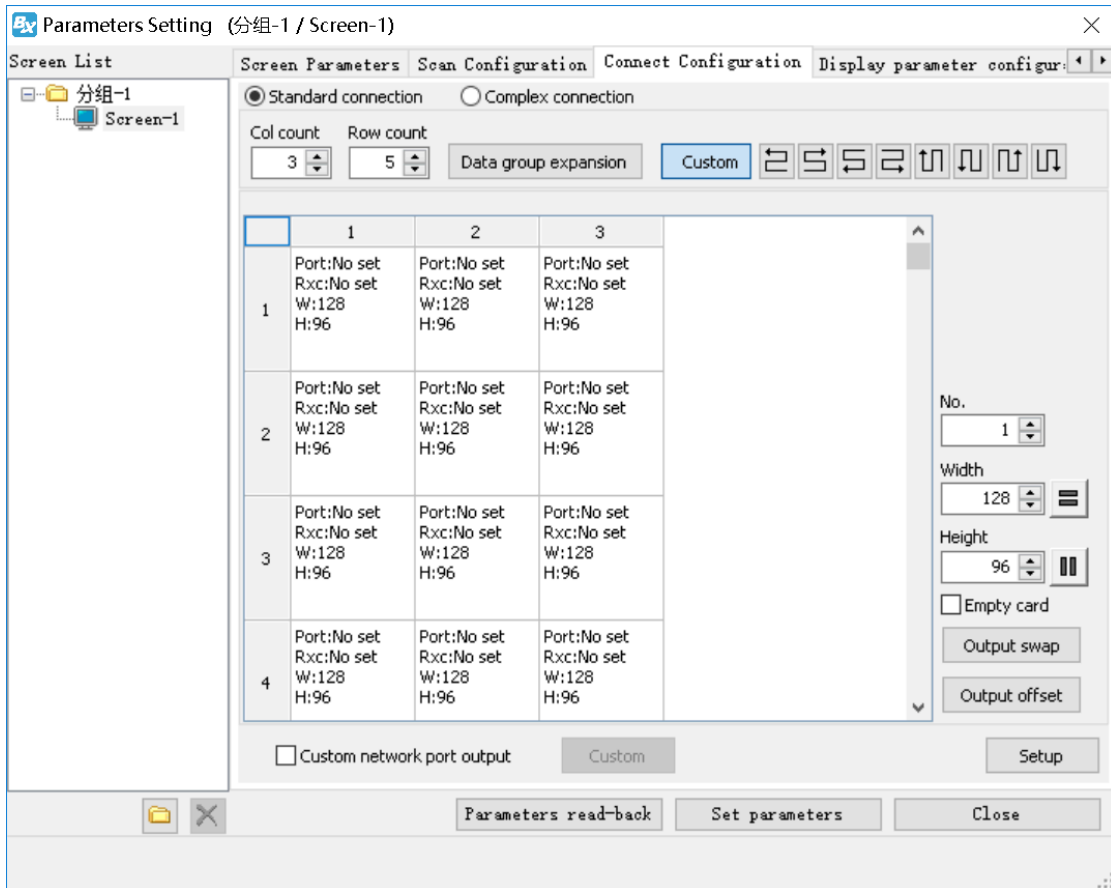
At last in the scan configuration interface will display the recommend scan



mod

Connection configuration

BX-Y2L needs to use together with receiving card bx-v75 / bx_v / bx_v75l .Next we configure the receiving card. In the screen parameter setting interface, click the connection configuration tab to enter the connection interface, as shown in the following figure. In the connection configuration interface, the user can set the number of horizontal and vertical receiving cards, as well as the relevant parameters of the serial number, width and height of the corresponding receiving card according to the actual situation. Finally, click set the connection of the receiving



card.

Step 1: fill in the number of horizontal and vertical cards according to the actual number of receiving cards and installation location.

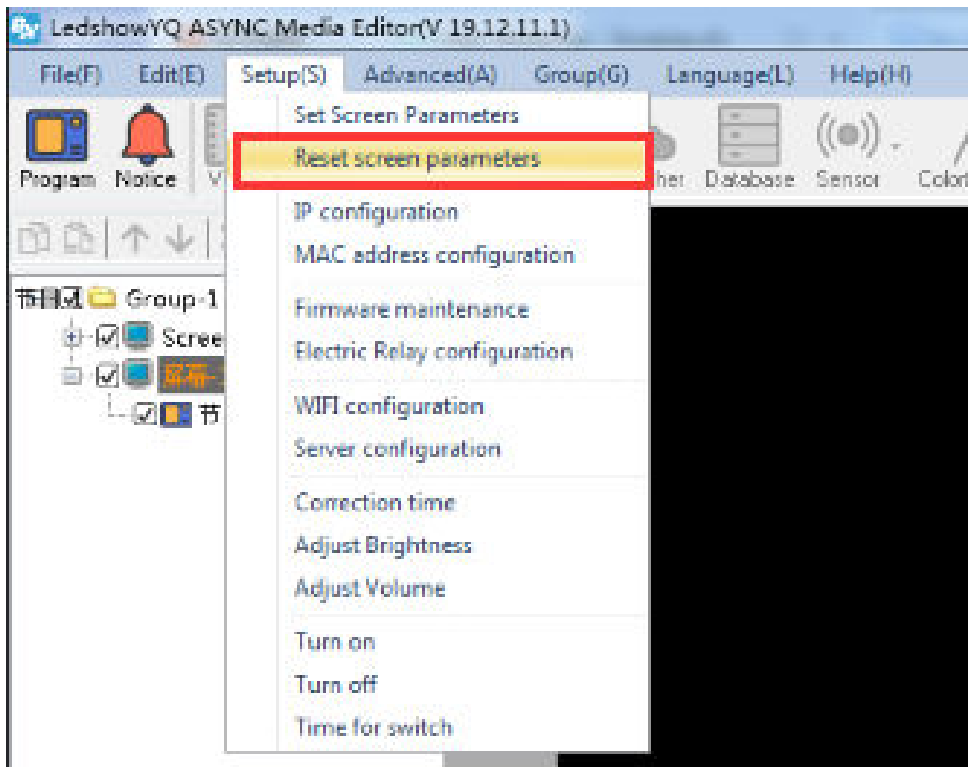
Step 2: select the location of the receiving card according to the connection sequence of the receiving card. Click at the receiving card location.

Step 3: set the load width and height of the selected receiving card.

Step 4: click the "set receiving card connection" button to complete the receiving card configuration.

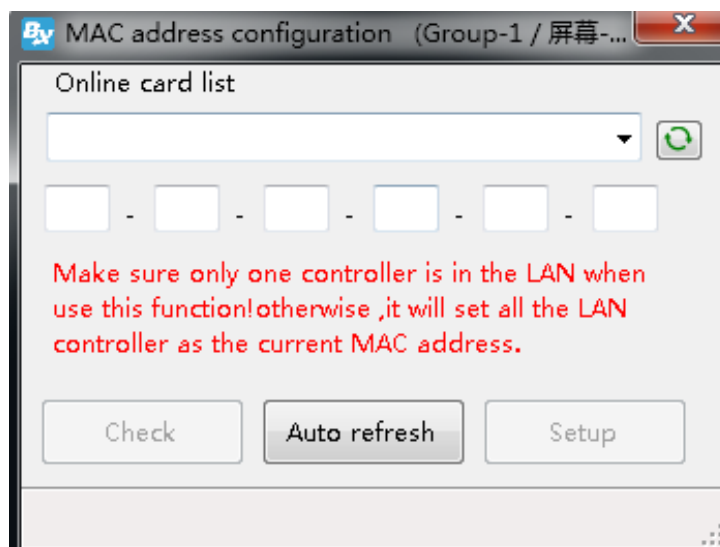
Reset screen parameter

Select the "reset screen parameter" function under the "setting" menu, and the screen parameters of the controller will be reset, as shown in the following figure:



MAC setting

Select the "MAC configuration" function under the "Settings" menu, and enter the password "168". The user can choose to query or automatically refresh the MAC address of the controller in the local area network, and then configure the Mac, as shown in the following figure:



Controller connect to the wireless router

After set the controller IP ,we should remove the computer network cable ,then connect with router .usually we use two kinds of router ,3G industrial wireless router and 3G/4G industrial router, users can set according to different router model.

1. Connect the 3G industrial wireless router

Step 1

Insert the SIM card to 3G wireless industrial router ,connect the receiver then use 5V power to connect with the router , as shown in picture .



Step 2

The network cable connects the router and controller, as shown in the figure below.



1. Connect to the BX-4G(U)

Step 1

Insert the sim card to BX_4G(U) , after connect the controller ,connect the 5V to router,as shown in picture 。



Step 2

USB cable to connect the router and controller (attention: after controller connect with the server, the yellow light is fast blinking /200ms; if controller didn't connect with the server, the 4G router is online ,then the yellow light is slowly blinking /2s)as shown in picture .



Step 3

After controller connect with the 3G/4G industrial router ,if u use the router for network , should check if the router have the" NetSniper" function or not ,must close the NetSniper function ,if not ,the controller can't communicate successfully.as shown in picture .



WEB server communication

All Y series controller can compatible with iLEDcloud server communication ,user can control or monitor any display screen anywhere.

1. Set WEB server

Open "ledshowyq 2018" software, click "controller IP configuration" under the "Settings" menu, enter the password "168", check "iledcloud" under "server mode", select "China Station" or "international station", then enter the account number of iledcloud platform after "user name", and the rest remain default, and finally click "Settings". As shown in the figure below.

IP configuration

Online card list

Automatically obtain IP address

Use the following IP address :

IP Address	Subnet Mask
192 . 192 . 192 . 192	192 . 192 . 192 . 192
Gateway	DNS
192 . 192 . 192 . 192	192 . 192 . 192 . 192

Port: 5005

Install Address:

iLEDCloud

China International

Server IP Address	Server Port
149 . 129 . 145 . 83	3800
FTP server IP address	FTP server port
149 . 129 . 145 . 83	2121

User name:

<https://www.iledcloud.com/>



Settings Close

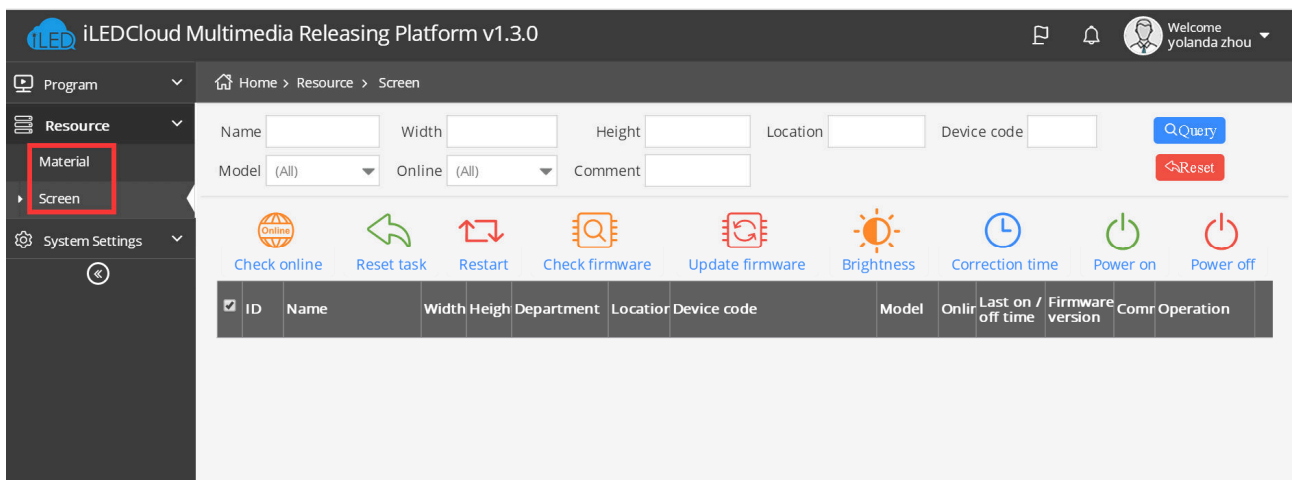
2. Login iledcloud

1) input website link : www.iledcloud.com , loglog into the iledcloud information

management platform,as shown in the picture :

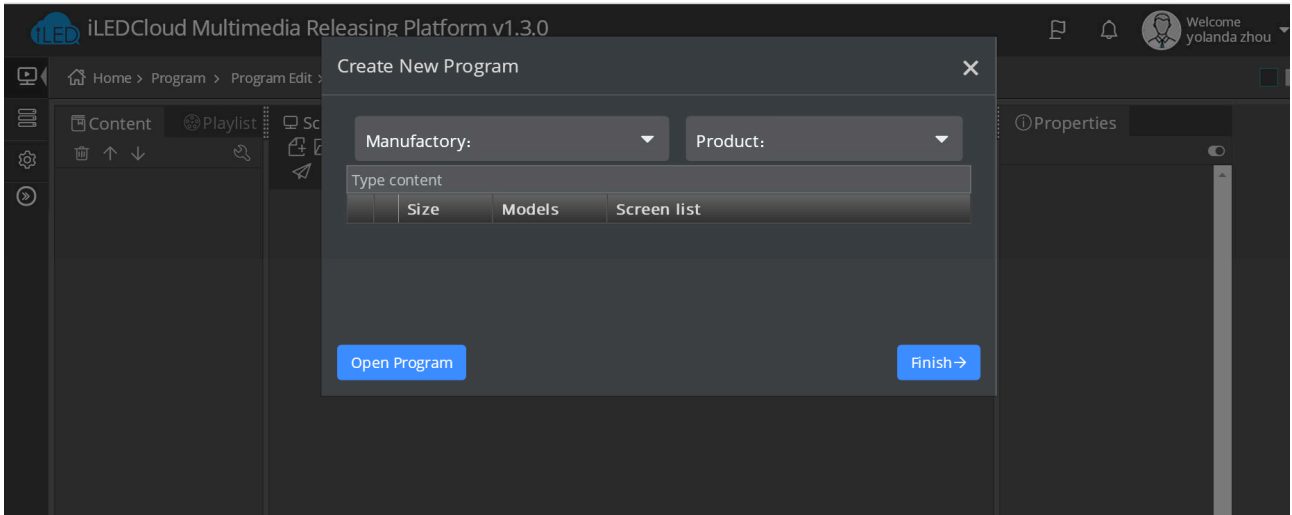


Make sure the controller is online then open www.iledcloud.com , 如 if the controller connect with the network successfully ,user can check thecontroller ID name ,screen width ,height and online status, ,as shown in picture ,if want to modify the screen name pls click  ,if want to modify the screen parameters ,pls click  .



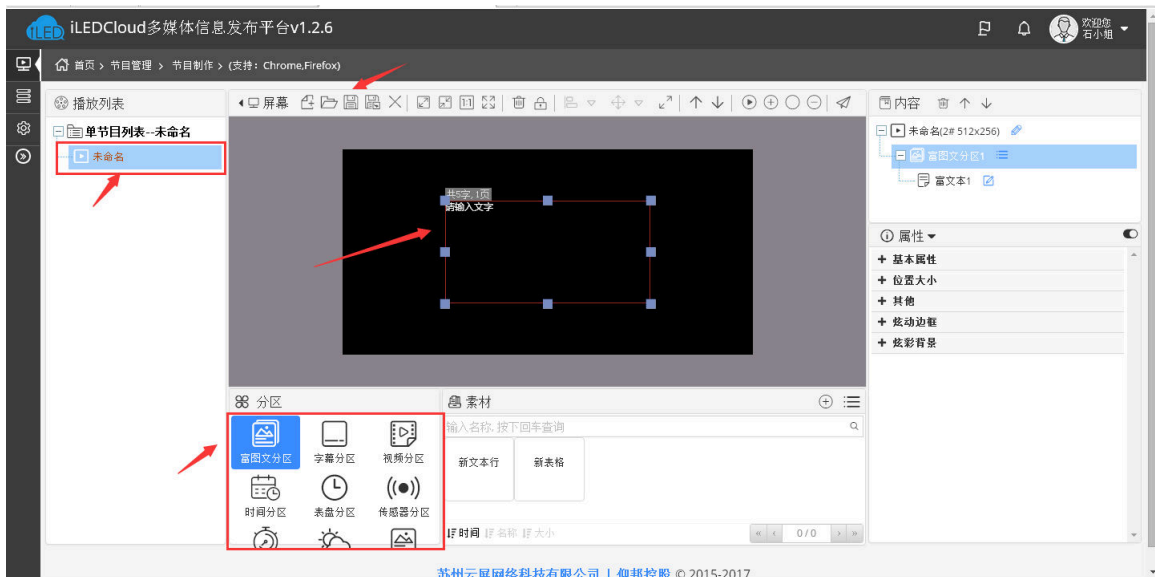
3. Create new program

Switch to the " program " --" program edit" --" create new program " then write the manufacture and products name ,then select the device and click "finish" as shown in picture .




4. Edit program

After edit the program ,in the program page ,user can add multi area,picture ,video ,text ,after edit ,pls click "save" , as shown in picture .

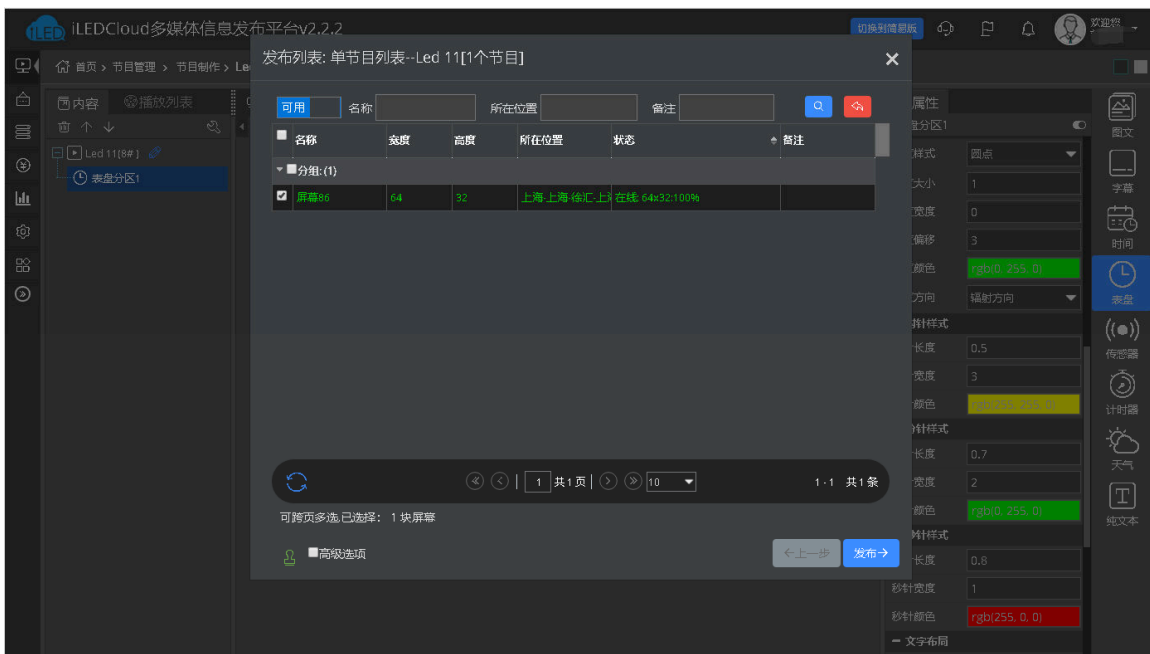


5. Release program

After the program is added, click the program release button 
 //



User click the release button of each playlist can step into the release interface ,user can select the next step to finish the release according to the release mode as shown in picture 91.

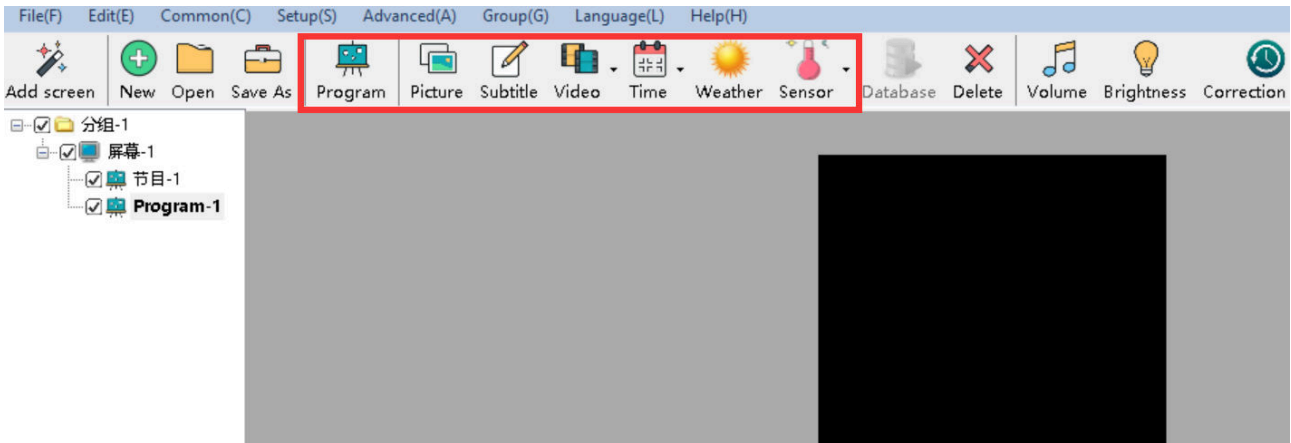


ADD PROGRAM STEPS

Add program

1. Add program

Add area then add program ,user can add program ,picture ,subtitle ,video,time ,weather or sensor and database area , as shown in picture :



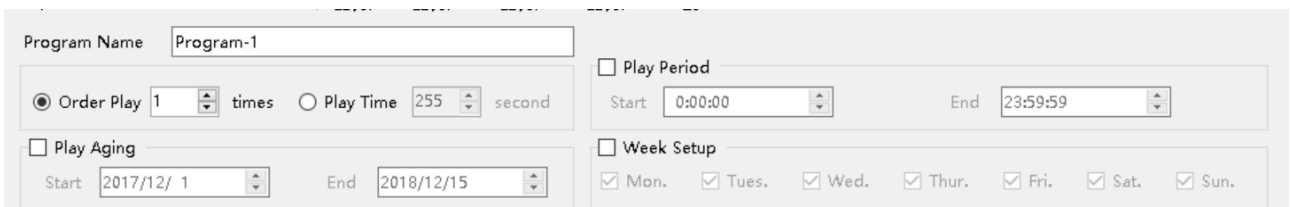
Picture 116

- **Picture zone** : add and play video,picture ,text,table、txt、 word、 excel、 flash、 gif etc.
- Subtitle zone : add one line simply format word

Video zone : add all series video format,support HDMI video and outer video signage like:camera,TV card ,DVD machine ect.

- Time zone : display time/dial/lunar/ timer count up/timer count down
- **Weather zone** : support all area weather value
- Sensor zone : display temp、 humidity , noisy , water , liquid and other sensor value.
- **Database zone** : visit mysql or sqlserver , display specified data content of the database.

2. Program attribute



Picture 117

- Program name : edit program name
- Orderly play : after play this program ,then turn to next program

- Play time : set play time ,after this time setting ,then turn to next program
- Play aging : play program during the setup time.
- Play period : play program during the start time and end time.
- Week setup : play program during the setup week

Add picture zone

1. Add picture zone



Add **Picture** zone ,user can click “edit”in the menu to add picture zone also .after add the picture zone ,add file to display as shown in picture , after add picture ,the LED screen and preview area will display at same time ,then user can modify the program as needed.

User can use the tools to modify the picture size and location.



Picture 118

2. Picture zone attribute

All picture attribute as shown in picture 98



Picture 119


- name : user can distinguish file name by this ,can modify by manual.
- X : file left up corner to the LED screen left boarder location ,unit is pixel.
- Y : file left up corner to the LED screen up boarder location ,unit is pixel.
- Width : file area width ,unit is pixel
- Height : file area height ,unit is pixel
- Display effects : default is random,the display effect :quick type,static display,continuously move up /move down/move left/move right,push up ,push down and so on.
- Display speed : display speed is from 1-16, 1 is fastest.
- Residence time : stay time from1s-128s,1s is the shortest time.
- Window alpha : File area alpha from 20%-100% , 100% is opacity
- Background transparent : select here ,the background will be transparent

Finish edit program

After the up steps ,if want to add other program ,just follow the same steps is ok ,after finish the edit program ,pls remember to save into the DISK,click menu--save play files.

Play program



If want to display the current program,click  , then the preview window and screen will display program at same time ,if want to play different program file,open the program file and play is OK.


AREA EDIT USER MANUAL

Play subtitle

1. Add subtitle zone






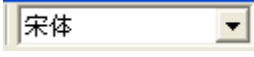
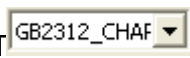
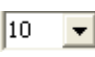



Click  to add one or more subtitle ,user also can add subtitle from menu

--add subtitle then click  to edit the subtitle. The subtitle can be file text or from the text window input.but the subtitle can't support the enter function.



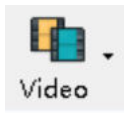
Picture 120

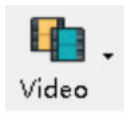
2. Subtitle attribute

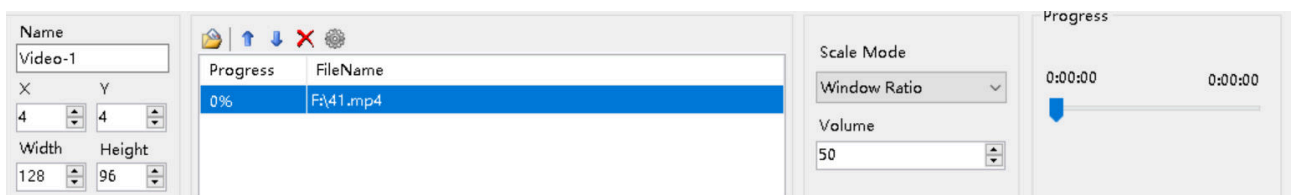
- Add  : add new subtitle ,not save the original one
- Open  : open*.TXS。
- Save  : save the current file to specified location。
- Font  : click the list to select different font
- CHARSET  : click to select the CHARSET
- Font size  : set the font size ,the value from8 ~ 200 , user can select in the list or input by manual
- Bold **B** : click to bold the font
- Italic *I* : click to make Italic font
- underline U : click to make underline font.
- Font color  : click to select font color
- Character spacing  : click to set the character spacing
- Page index  : if the file have multi-page, user can use this function to check the page as wanted ;
- Statistics : input the total page count and char count,then adjust the word spacing of the selected contents. Page Count=2 Char Count=20 The word spacing to adjust the contents of only selected

Play video

1. add video



Click  to add video ,HDMI video or outer video source,user also can use the "add video zone" function to add video.LedshowYQ 2018 support all kinds of video format like : rmvb、 mp4、 flv、 mpg、 vob、 mkv、 f4v、 mpeg etc.



Picture 121

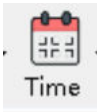
2. Video attribute

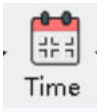
User can modify the scale mode ,volume and progress as wanted.

- Scale mode : can used for scale widnow ratio or original ratio.
- Progress : user can drag the bar to fast forward or backward the program.
- Volume : change the video volume from 0 to 100
- Outer video source : can select the CVBS or HDMI as the video source.

TIME

1. Add time

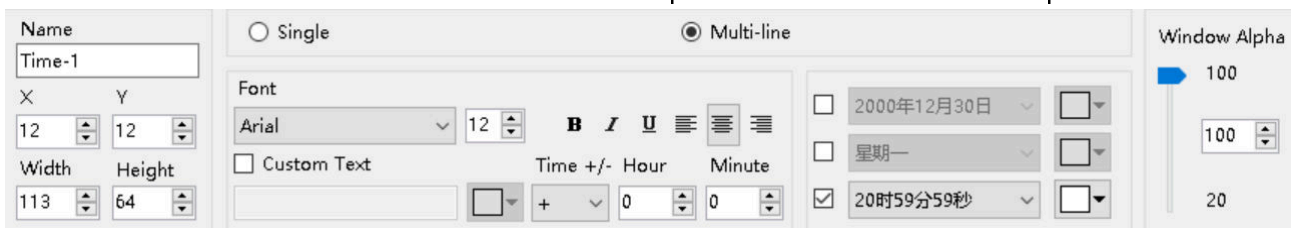


Click  in the menu, select the time, lunar or timer, also user can select the “edit”--select the time zone, dial zone, lunar zone or timer zone.

2. Time attribute

1) Time zone

After add the “time zone” user can set the time parameters as shown in the picture 122.



Picture 122

2) Dial zone

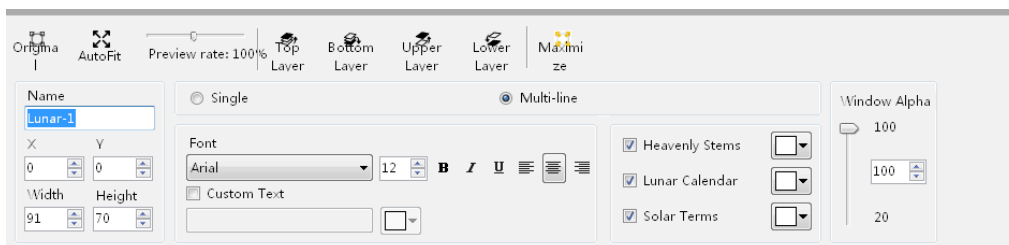
After add the “dial zone” user can modify the dial parameters as shown in picture 123.



Picture 123

3) Lunar zone

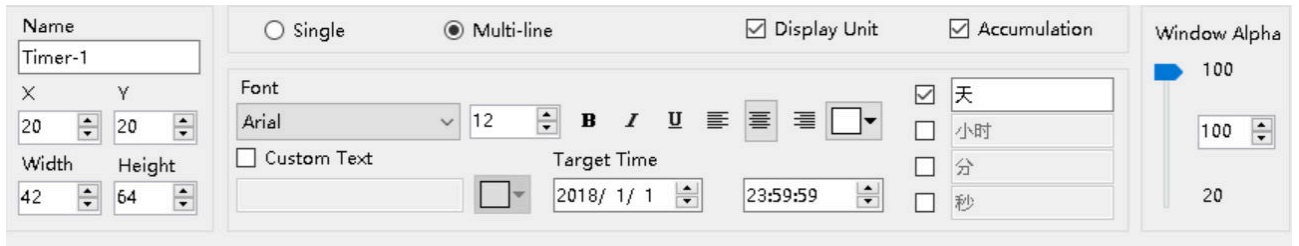
After select the “lunar zone”, user can set the lunar parameters as shown in the picture 124.



Picture 124

4) Timer attribute

After select the “dial zone” user can set the timer parameters as they want.




Picture 125

Weather zone

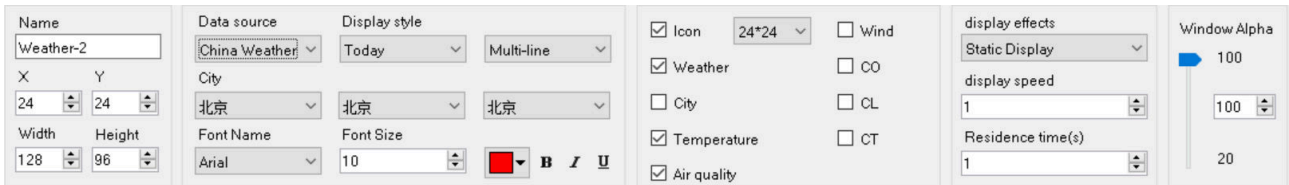
1. Add weather



Click  , or user can use the “edit”--“add weather” to add one weather zone.

2. Weather attribute

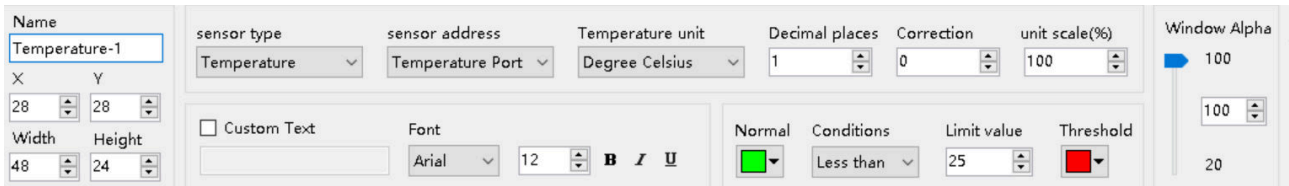
After add “weather” , user can set the weather parameters as shown in the picture .



Picture 126

1) Temperature sensor

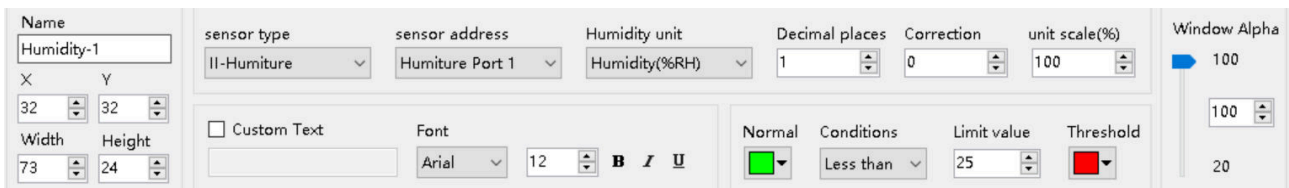
After select “temperature” user can set the temperature value as shown in the picture.



Picture 127

2) Humidity

After select the humidity ,user can modify the humidity parameters as shown in picture .



Picture 128

3) Noise

After select the humidity ,user can modify the noise parameters as shown in picture .

Picture 129

4) Water

After select the humidity ,user can modify the water parameters as shown in picture .

Picture 130

5) Liquid

After select the liquid,user can modify the liquid parameters as shown in picture .

Picture 131

6) Sensor


After select the sensor ,user can modify the sensor parameters as shown in picture .

Picture 132

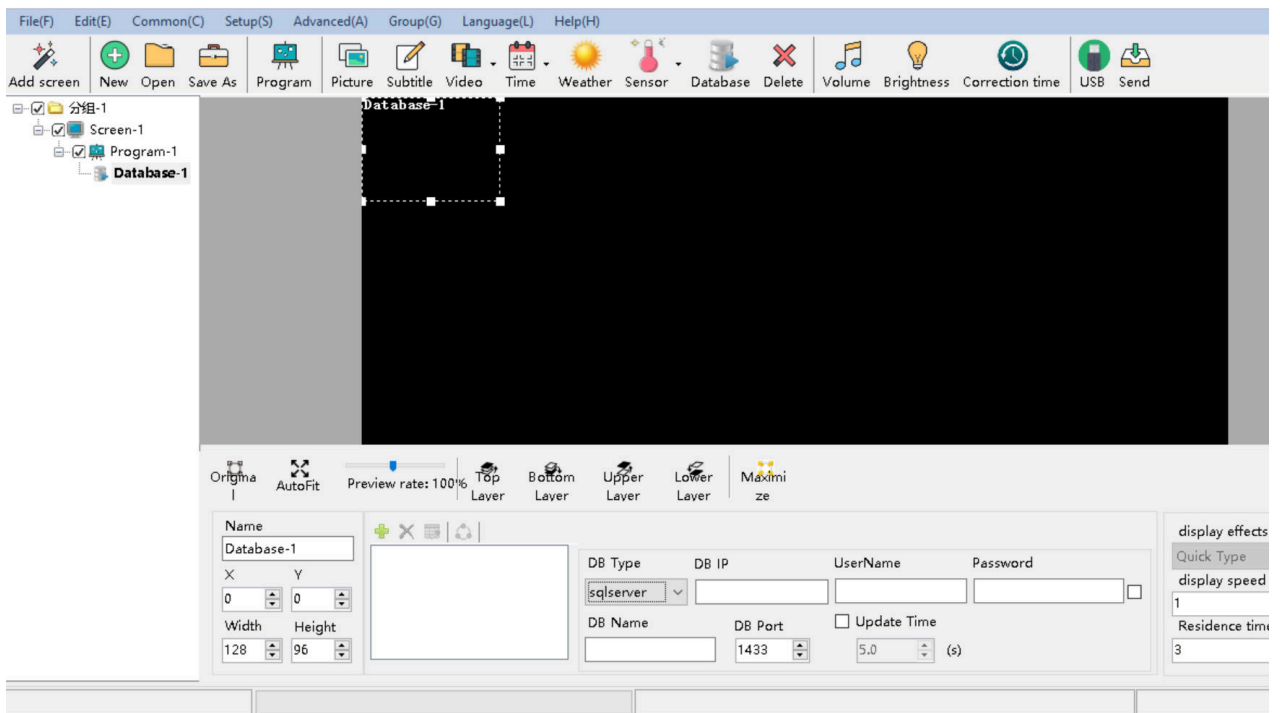
Database

1. Add database



Click  to add database or user can edit the database in the menu-“ edit” --“

add database zone”

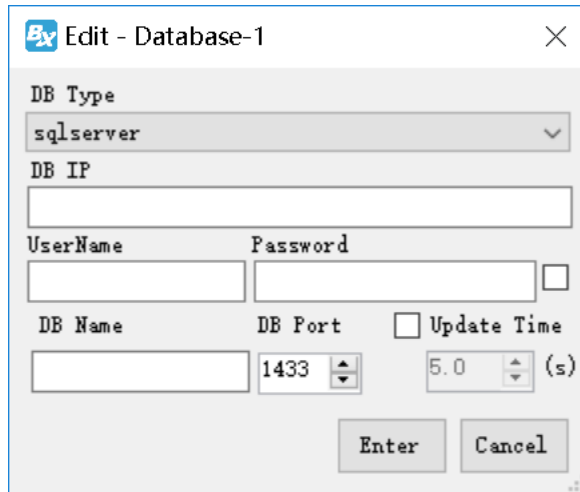


Picture 133

2. Database attribute


Click attribute area  Picture , user can select the DB

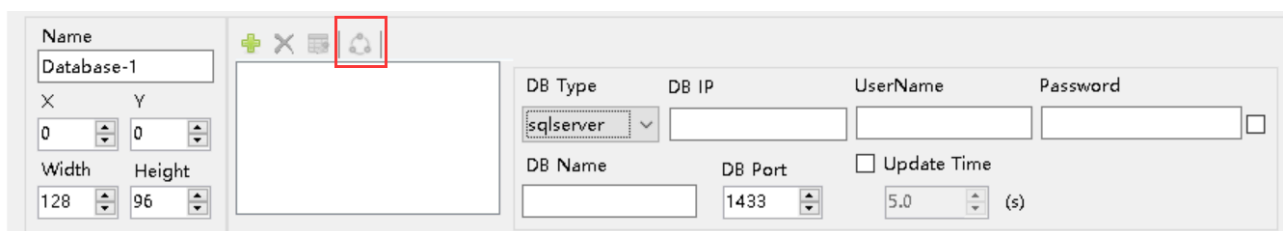
Type,name ,IP ,password ,port ,update time and other parameters ,then click “enter”.



Picture 134

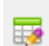
User also can write the “database” type in the attribute area , ,user name and password,database name and port and other parameters.(for example we connect one sqlserver database table ,mysql is similar)

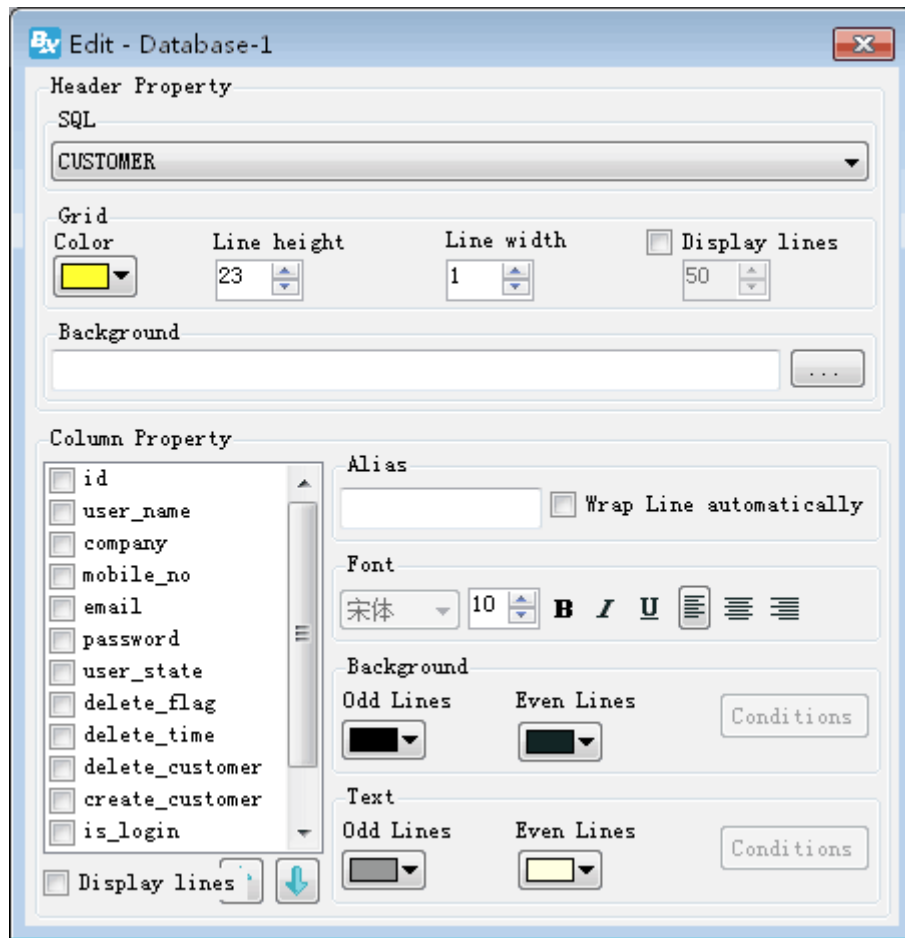
Firstly select the“sqlserver” , database address : 112.65.245.174 , user name : sa , password : 123456 , database port : 1433 , other parameters keep in default is OK as shown in Picture 135 ,fnish all and then click  to connect with the database.



Picture 135

3. Database attribute

When user connect with the database then click  to set the database table .in the prompt page as shown in picture 136,user can modify the parameters of the database table (here we connect with CUSTOMER table ,for example)

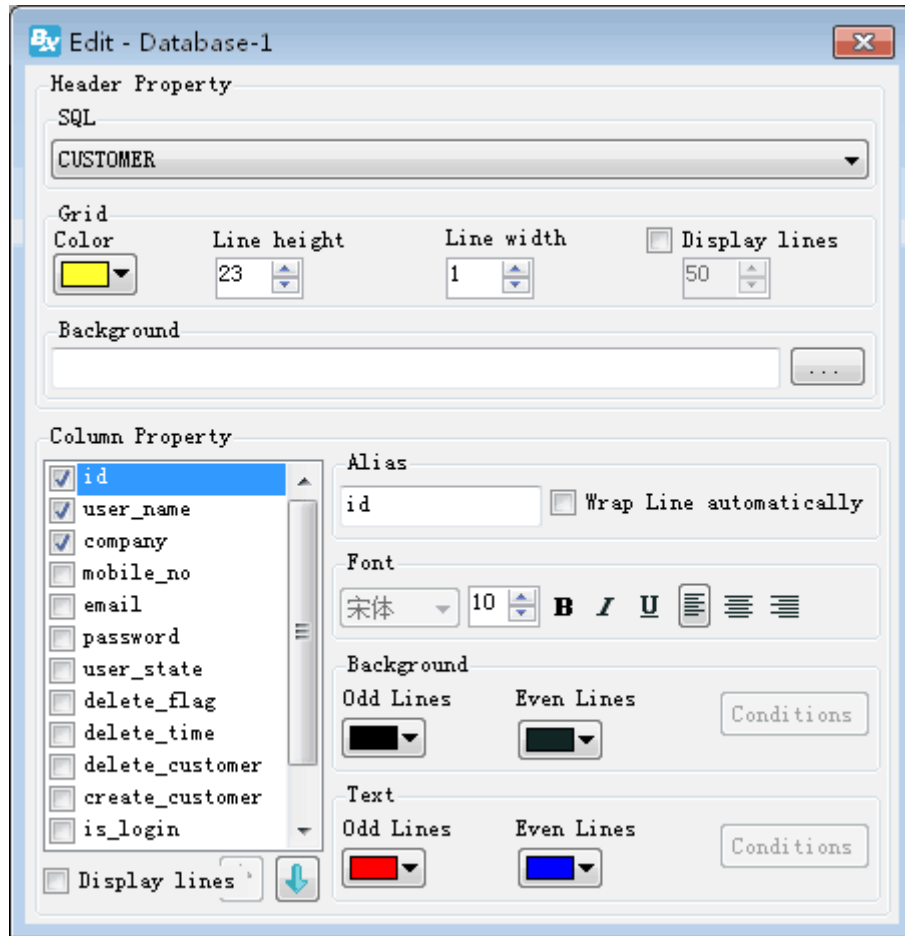


Picture 136

- SQL : in the SQL list select one table named CUSTOMER
- Grid color : set the database table color ,here is default.
- Line height : line height for the database grid ,here is default
- Line width : line width for the database grid ,here is default
- Display lines : line numbers of the database grid ,here is default
- Background : user select one of pictures as the database background
- Column property : user can select the "column property" as shown in picture 115,here we select three column name
- Wrap line automatically : after selected , the database grid size and contents will change line automatically

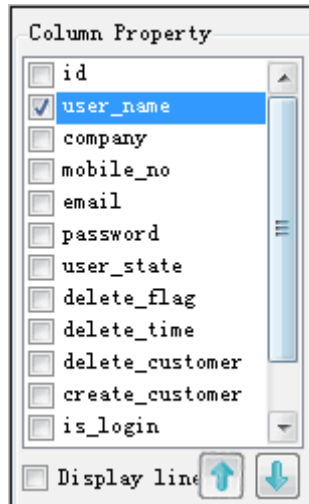
- Column font size : set the column font size ,here is default.
- Bold : set the font size as bold ,here is default
- Italic : set the font size as italic ,here is default
- Underline : set the font size as bold ,here is default
- Left aligned \centered \ right alignment: set the column text alignment to left, center or right alignment.Select the default here.
- Background color : user can set the column odd lines and Even lines background color ,here select the default.
- Column font color : set column font color ,now odd lines select red color ,the Even lines select the blue color

After setup the attribute as shown in picture 137, we wish to named the grid as CUSTOMER ,
the grid lines is yellow ,line height is 23,line width is 1 ,display the first three columns,the odd
lines is red color ,the even lines is blue ,other value is default.



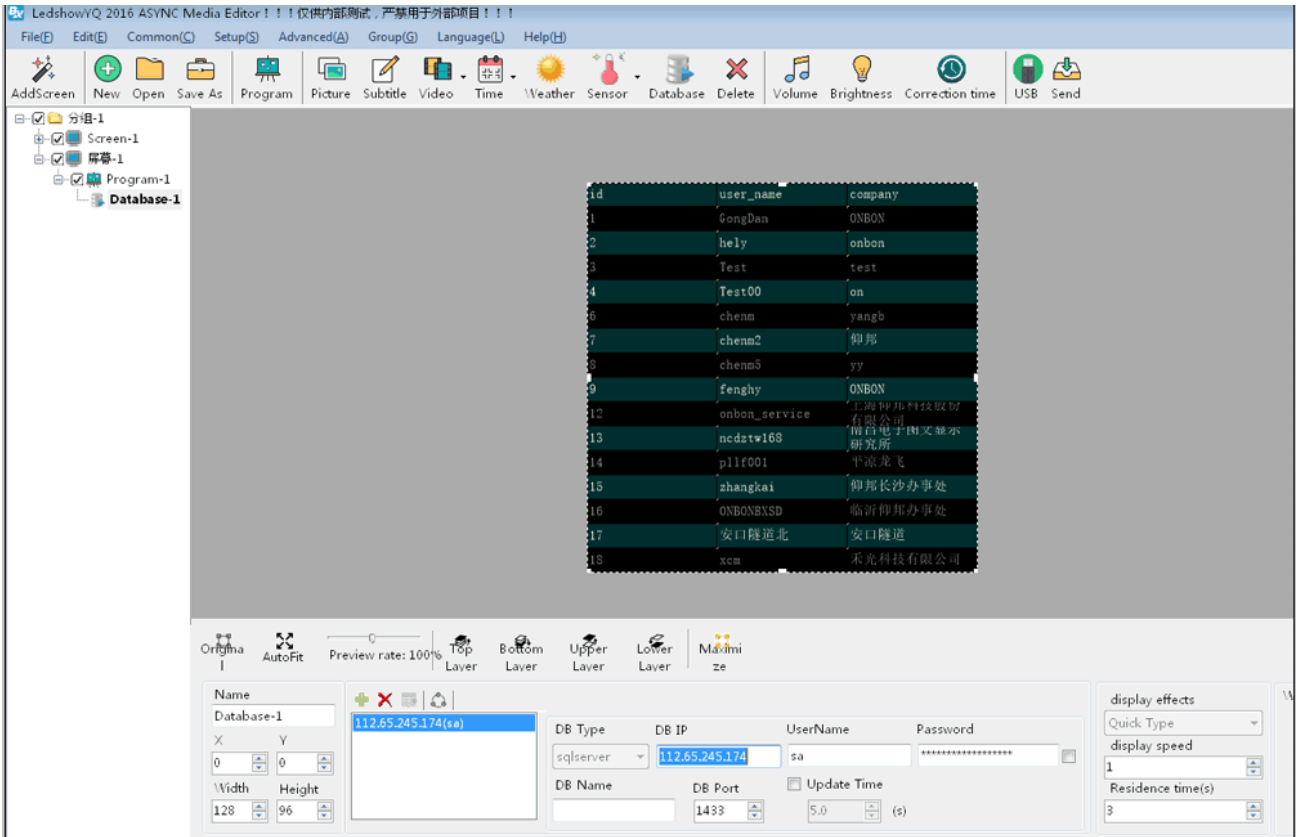
Picture 137

User can select the display order use the direction arrow as shown in picture 138.



Picture 138

After setup , exit the “database parameters” attribute page ,in the display window of the software ,can preview directly database contents as shown in , picture 139.and then click “send” so the LED screen can update database grid in real time .as shown in picture 140




Picture 139

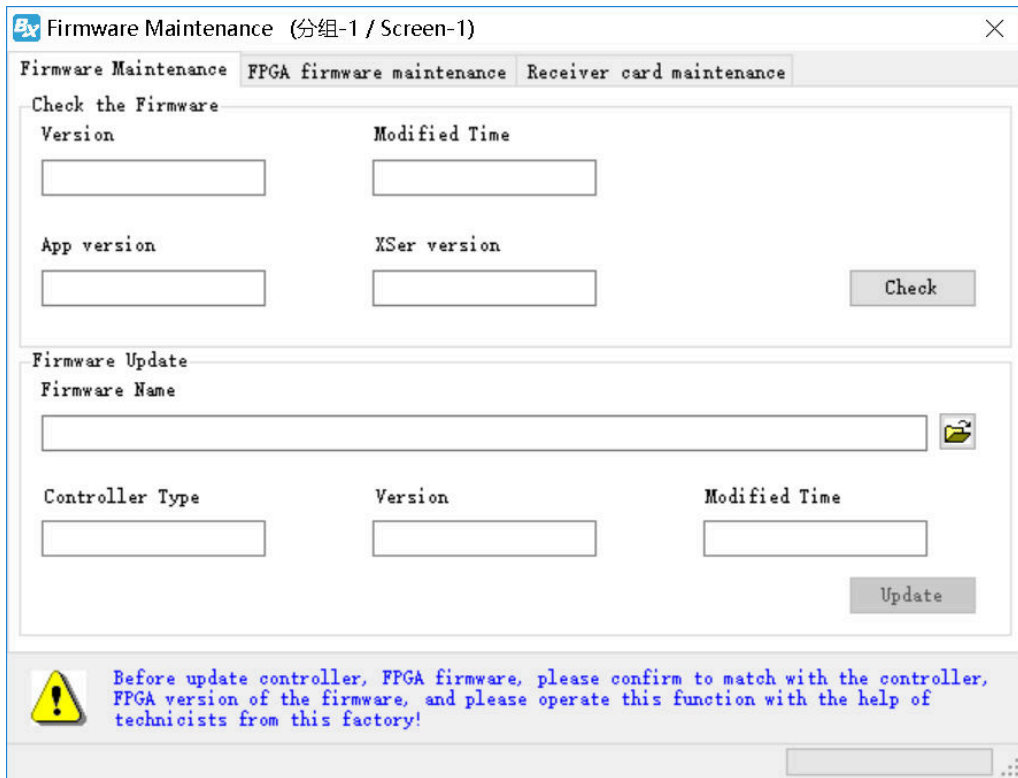
	user_name	company	mobile_no
368	l189189189	南昌海神	13732957986
369	tzehending	CDtech.co	13958671810
370	libin7758	临沂办事处李彬	18669893859
371	mingshudianzi	德州天星电子科	0534-3288608
372	sergei	555522qw	555522qw
373	HYPDZ	南阳市壹品电子	15537710111
374	danpusen	丹普森光电	15986789296
375	aabb	济南	
376	wfsflcpfxzx	潍坊市福利彩票	0536-2600209
377	wffczx	潍坊市福利彩票	0536-2600209
378	abba	内蒙	
379	000000	齐翼	15653603301
380	417730819	郑州办	13525519293
381	guzong123456	山西捷顺科贸有	7234691

Picture 140

Firmware maintenance


1. controller firmware maintenance

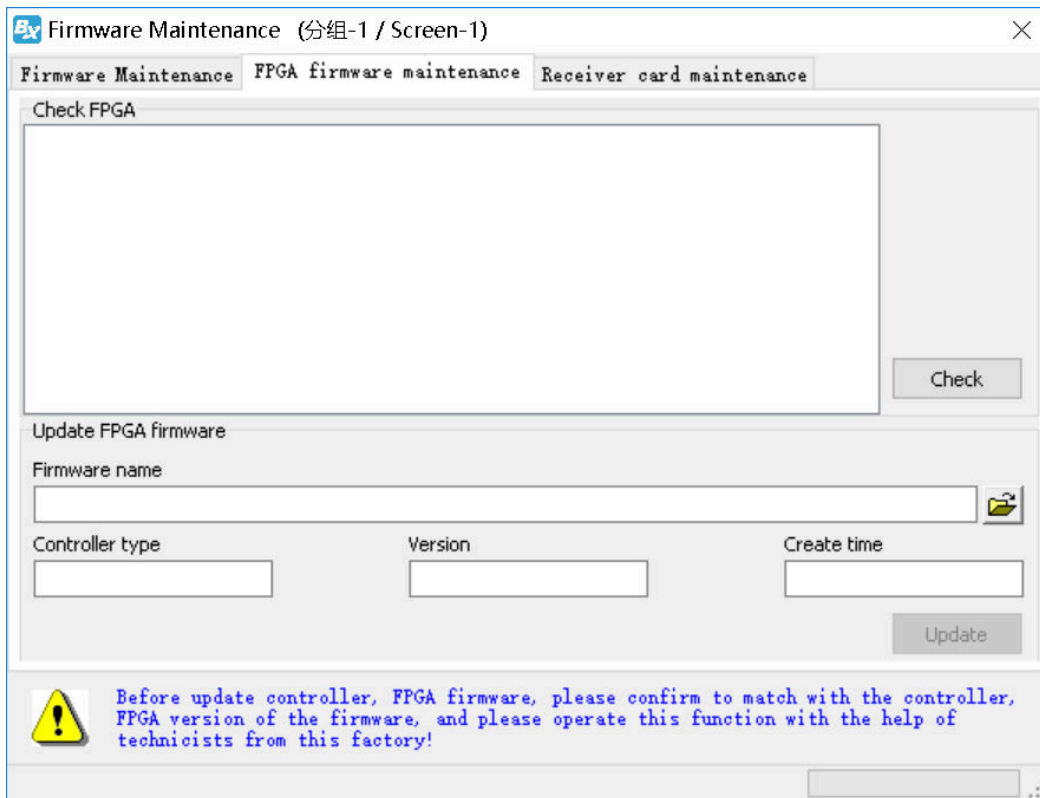
To make sure the controller software version is compatible with LedshowYQ software , user can maintenance controller firmware firstly ,in the "setup" --" firmware maintenance" input password "888" , as shown in picture .click "check" to find the connected controller ,then click  to update controller firmware ,then click "update" .



Picture 141


2. FPGA firmware maintenance

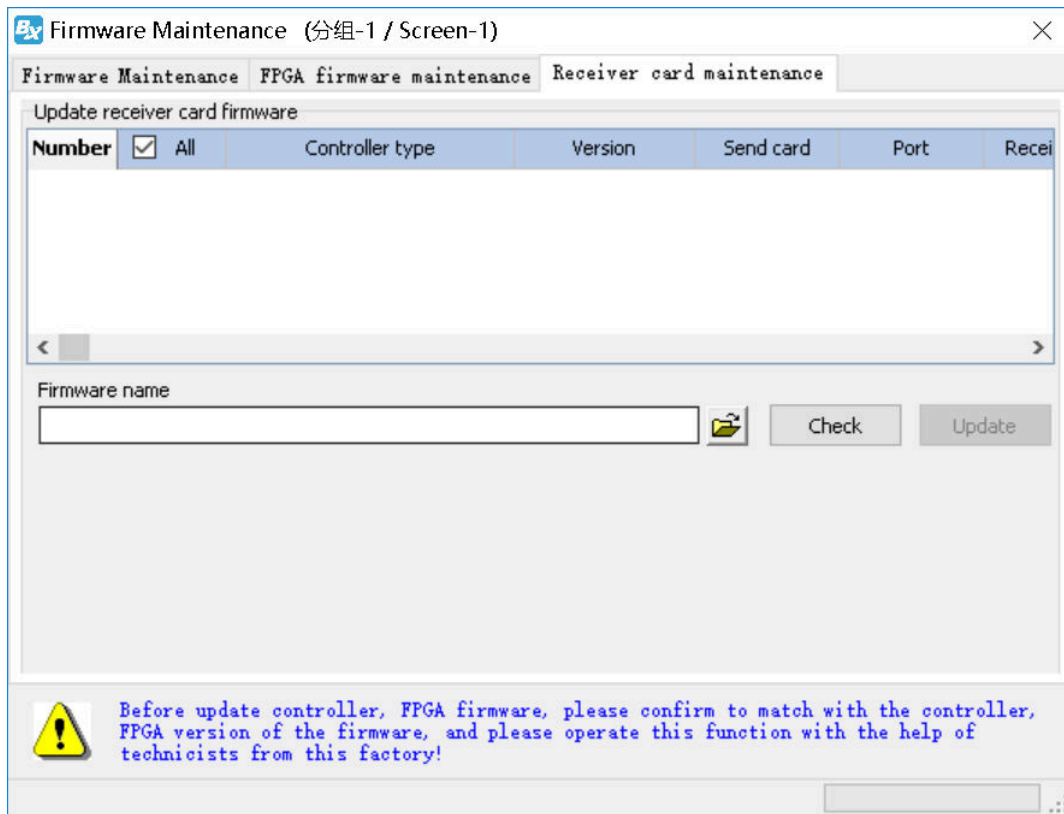
To make sure the controller FPGA version is compatible with LedshowYQ software , user can maintenance controller firmware firstly ,in the "setup" --" FPGA maintenance" input password "888" , as shown in picture .click "check" to find the connected controller ,then click  to update controller FPGA firmware ,then click "update" .



Picture 142

3. Receiver card firmware maintenance

To make sure the controller software version is compatible with receiving card , user can maintenance receiver card firmware firstly ,in the “setup” --“ firmware maintenance” --“ receiver card maintenance” , as shown in picture .click “check” to find the connected controller ,then click  to update receiver card firmware ,then click “update” .



Common functions

Time correction

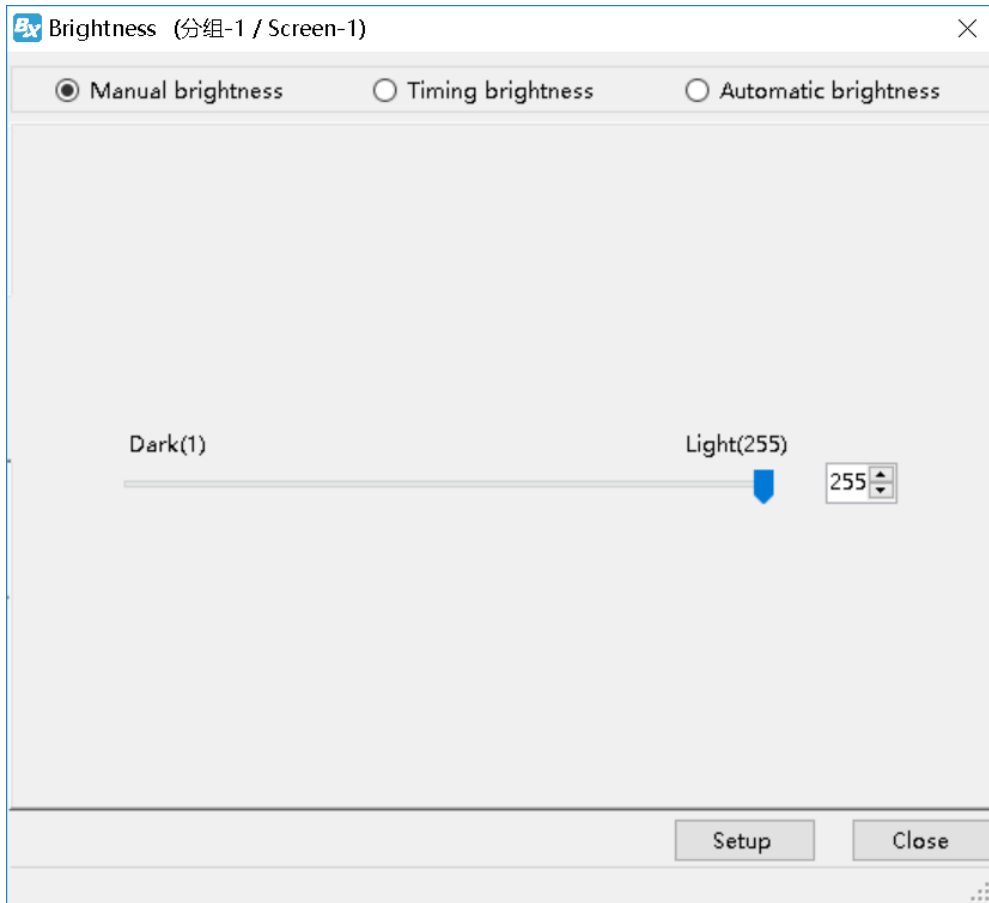


Click **Correction time** , or user can use the "common" menu and select "correction time" to correct time for the controller time and chip .

Brightness



Click **Brightness** , user also can use the "common" in the menu to select "brightness" function



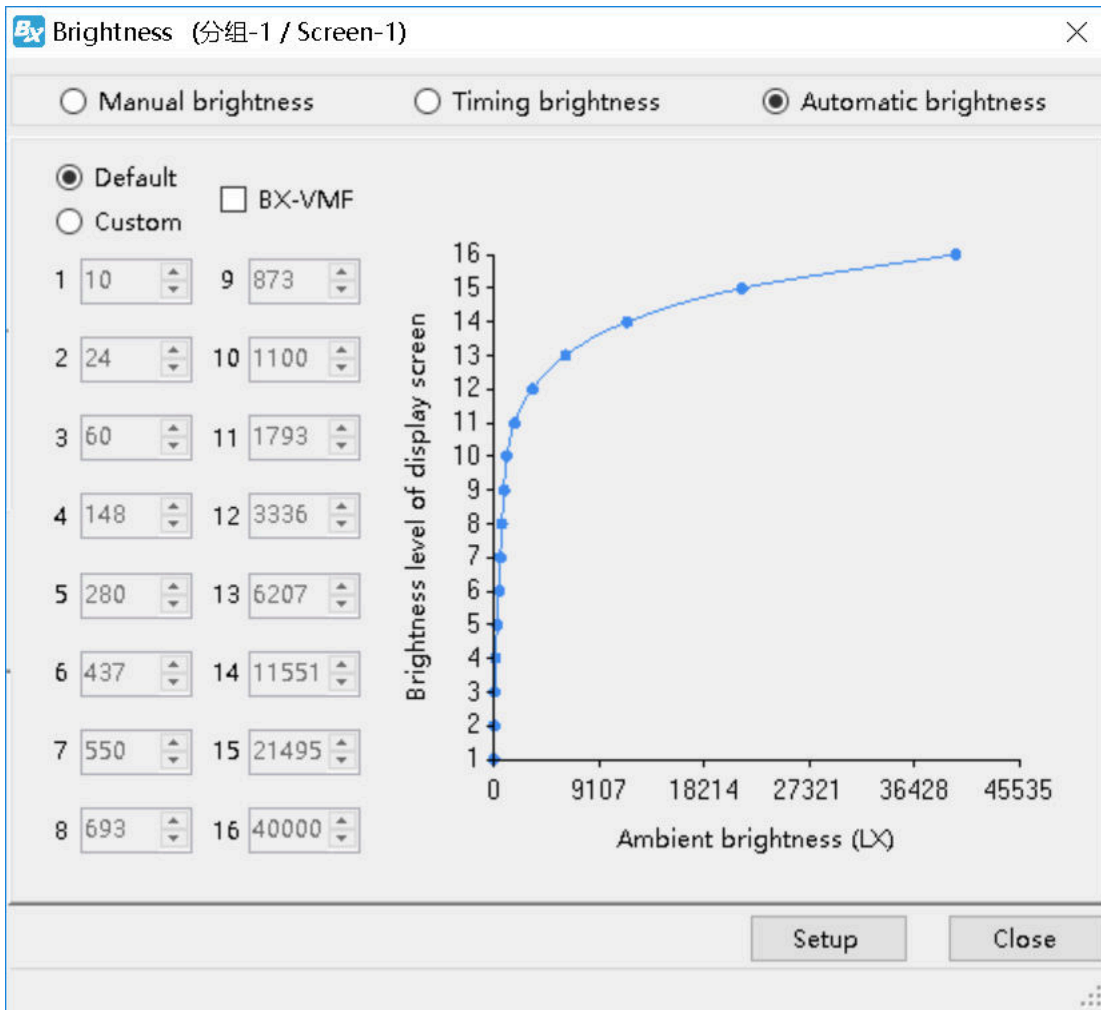
Picture 144

As shown in Picture 144:

1. Manual brightness : manual drag the value rule then click" setup" to adjust the brightness.

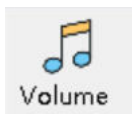
Timing brightness : totally there are 4 time period ,user can select and set the brightness value as shown in picture 145.

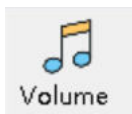
Automatic brightness : after user connect with the sensor ,pls select "BX-VMF" , as shown in picture 125 ,brightness value can be default or customized ,at last pls select "setup" screen brightness will be changed according to environment temperature brightness.



Picture 146

Volume



Click  or user can change the volume from the menu --"common"--"volume"

Turn on

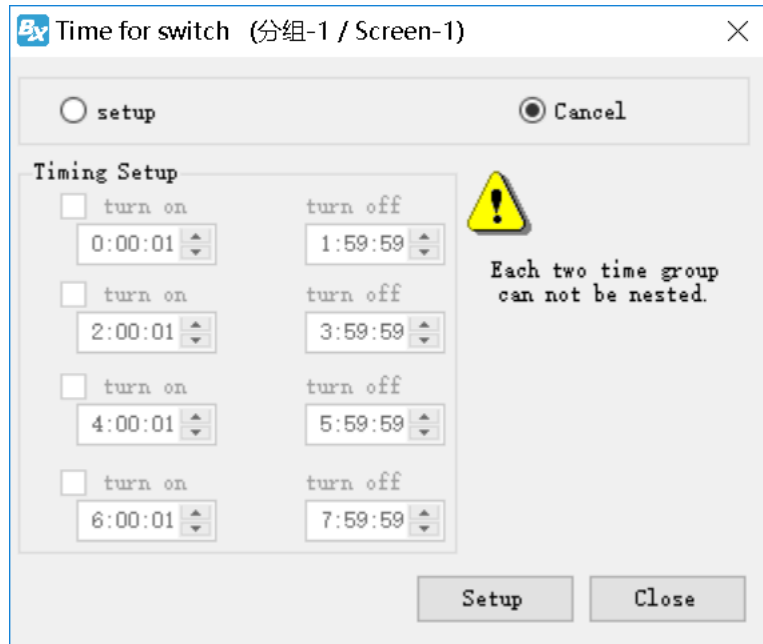
User can use the common--" turn on" to start the screen.

Turn off

User can use the common--" turn off" to close the screen.

Timer for switch

User can use the "common" function--" timer for switch" to set the turn on&off time ,as shown in picture.



Picture 147

Switch the storage medium


User can use the "common" "--" switch the storage medium" to save the program to SD card or U disk or internal memory.

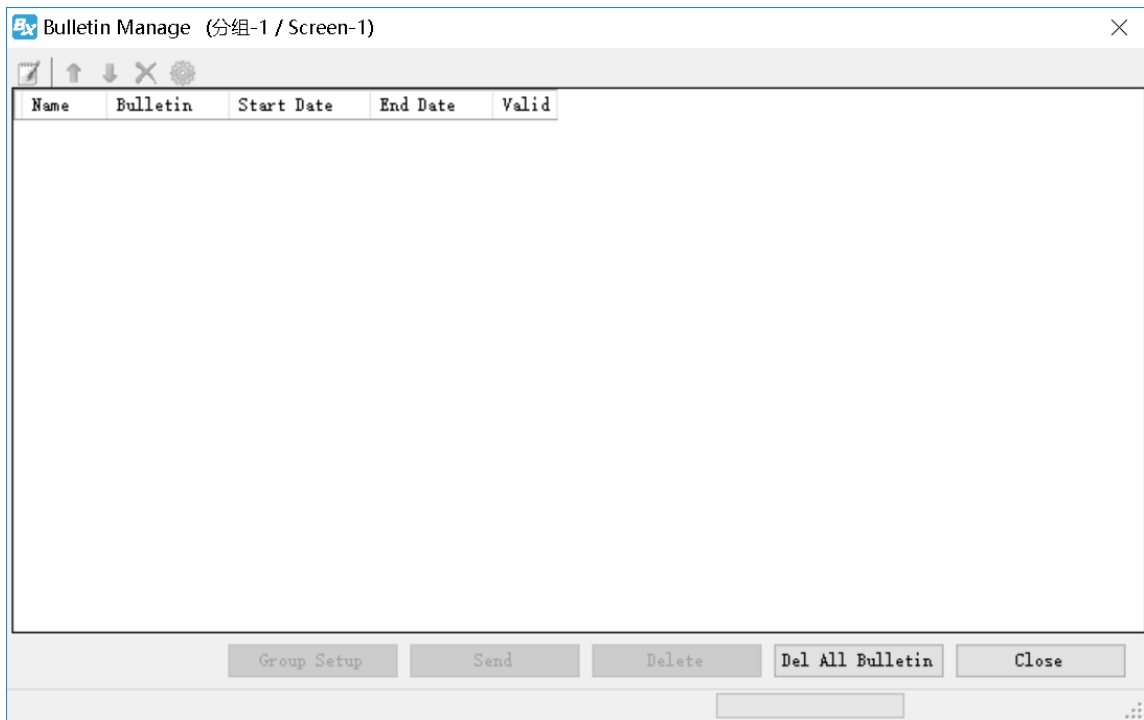
Advanced

Bulletin management

Bulletin management mainly used for insert bulletin.

1. Bulletin management

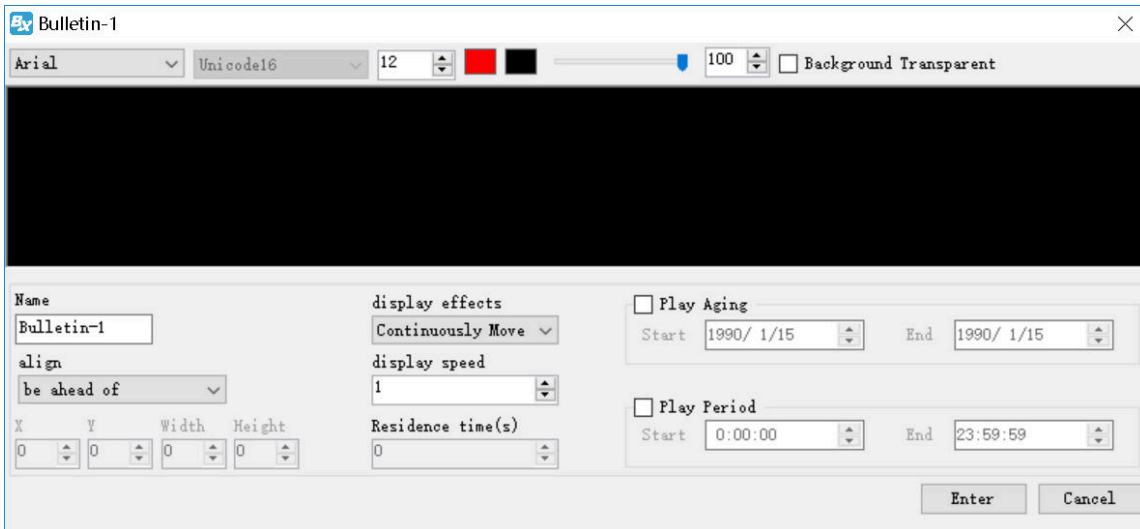
Click "advanced" -- "bulletin management" --input password" 888" ,as shown in picture .click  , as shown in picture 154.



Picture 154

2. Bulletin attribute

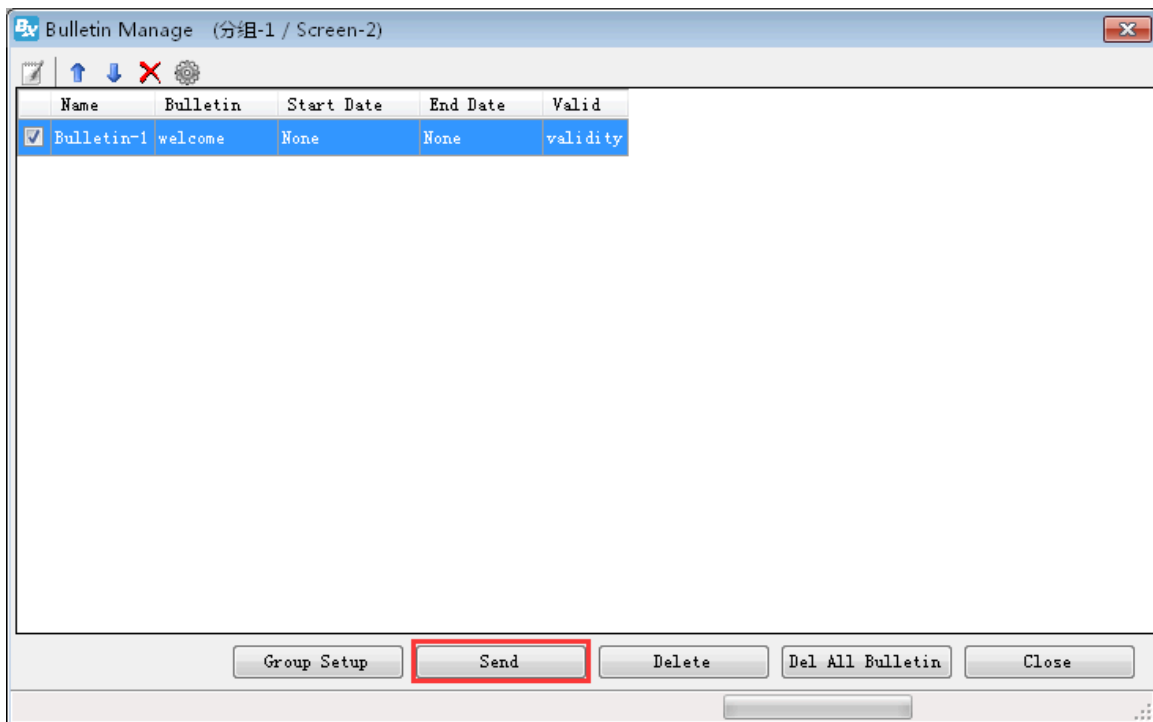
In the bulletin attribute area can set the display location,running speed ,stay time ,font size,font color ,background color ,alpha or not ,play aging ,play period and so on.



Picture 155

3. Play /delete bulletin

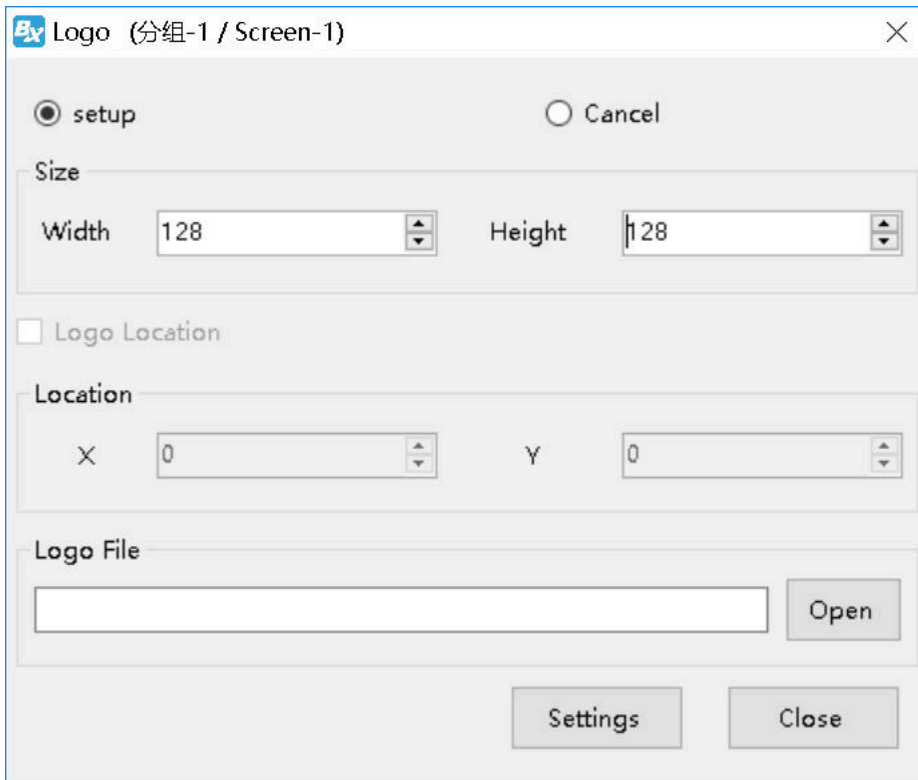
After set all information then click "sending" to play bulletin ,or click "delete" to delete the bulletin.



Picture 156

Start Logo configuration

Click "advanced" then start "start Logo configuration", log into the logo configuration as shown in picture . user can set the logo width ,length and coordinate location.

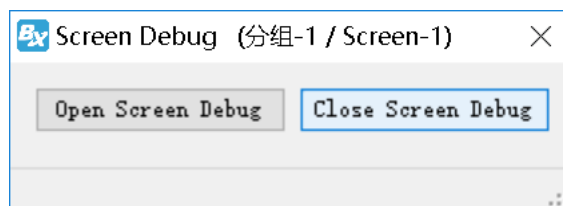


Picture 157

Screen debug

LED debug is mainly for fix the screen easily ,in the corner"LED"display can select open and close.

Click "advanced"--"Screen debug"then turn to the LED screen debug as shown in picture . user can select open or close screen debug.



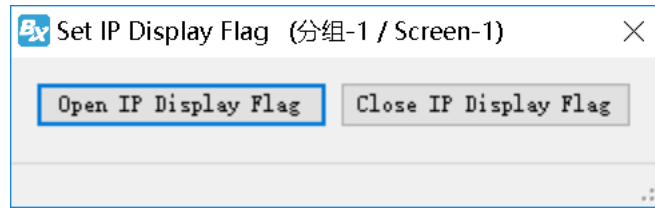
Picture 158

Set IP display flag

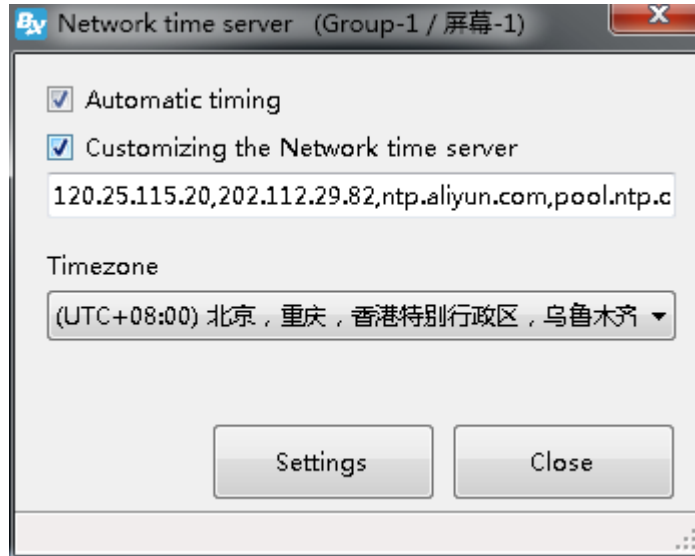
IP flag means when there is no program in the controller ,the screen will display "pls add program "controller model ,parameter ,IP etc . the IP display or not depend on the IP flag.

Click the "advanced"menu ,in the display list ,pls select "display IP flag"as shown in

picture .

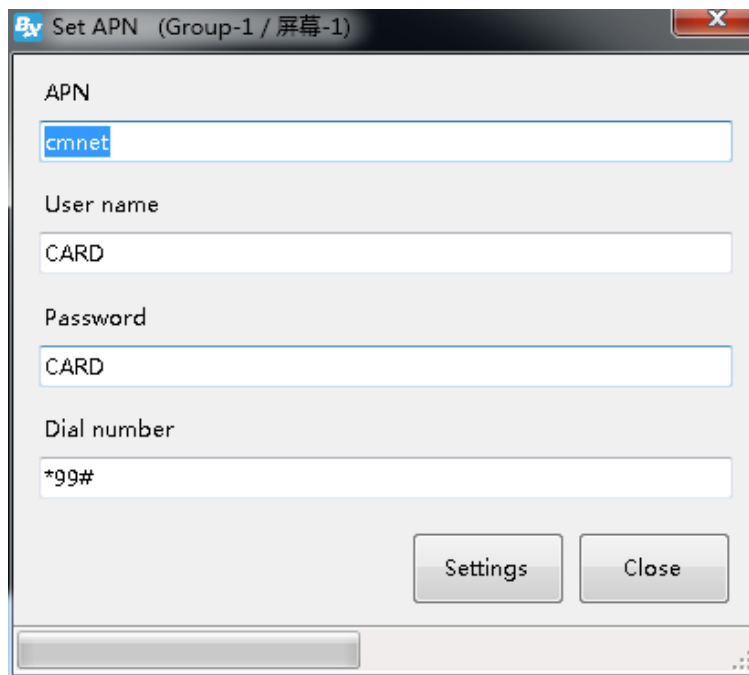


Network time server



Set APN

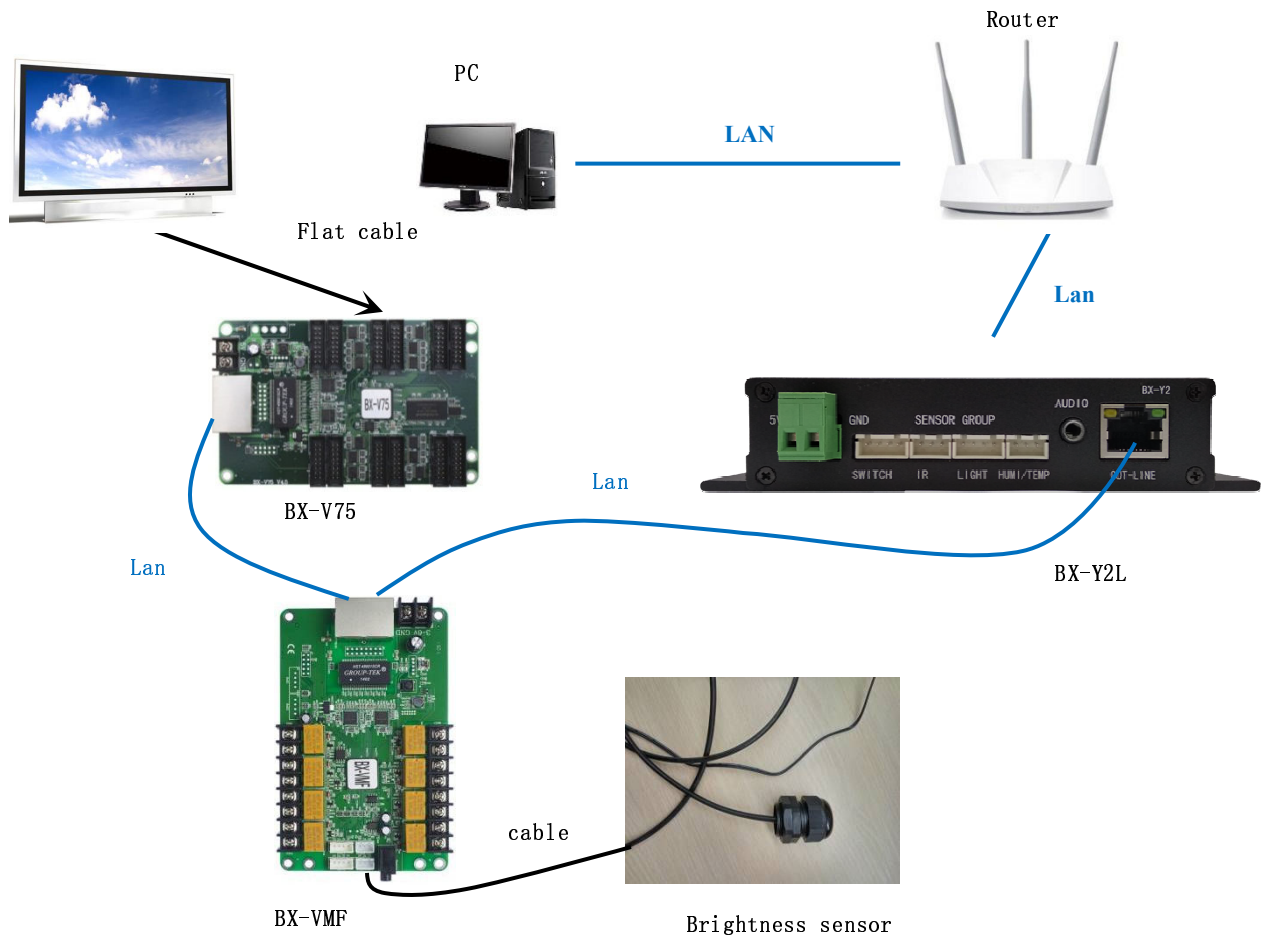
Click the "advanced" menu on the main menu bar, and select the "set access point (APN)" menu item in the drop-down menu to enter the setting dialog box, as shown in the following figure. Users can fill in the name, user name, password and dial-up number of APN, and then click "set" to complete the configuration.



Multi function card configuration

Bx-vmf and bx-y series multimedia player products can support sound transmission, multi-channel temperature and humidity, smoke and brightness sensor collection, etc. The multi-function card also supports multi-channel automatic switches: air conditioning temperature limit, fan dehumidification, large screen power supply, etc., which can be flexibly configured by users according to their needs.

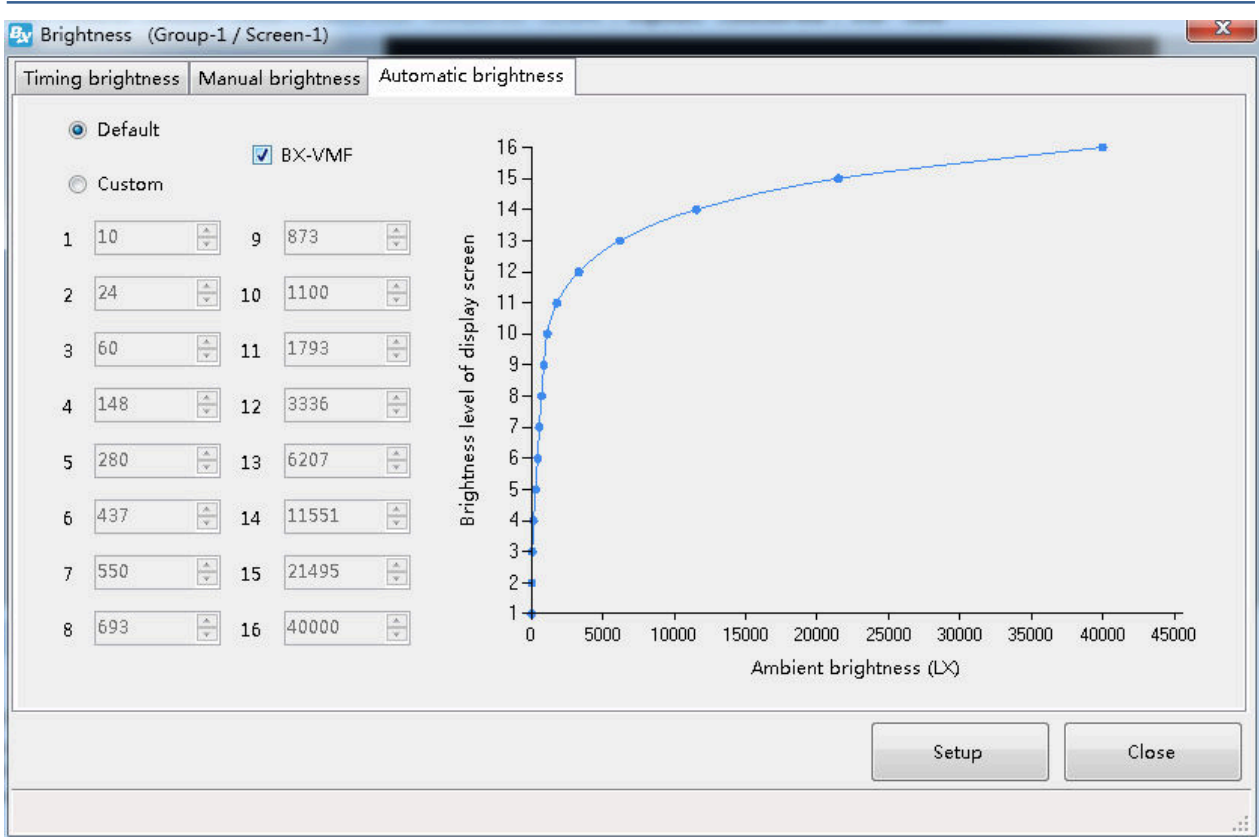
Hardware connection



1. Brightness adjust



Click **Brightness**, user also can use the "common" in the menu to select "brightness" function



2. Manual brightness : manual drag the value rule then click" setup" to adjust the brightness. Timing brightness : totally there are 4 time period ,user can select and set the brightness value as shown in picture .

Automatic brightness : after user connect with the sensor ,pls select "BX-VMF" , as shown in picture , brightness value can be default or customized ,at last pls select "setup" screen brightness will be changed according to environment temperature

Brightness.

Brightness change display effect

Before change brightness

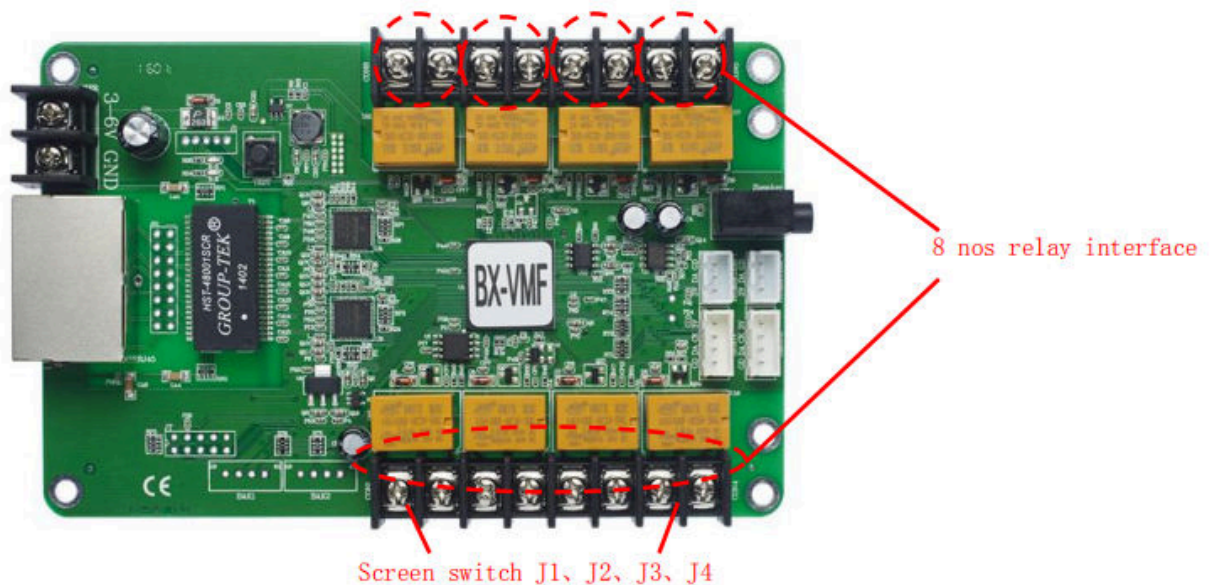


After change brightness



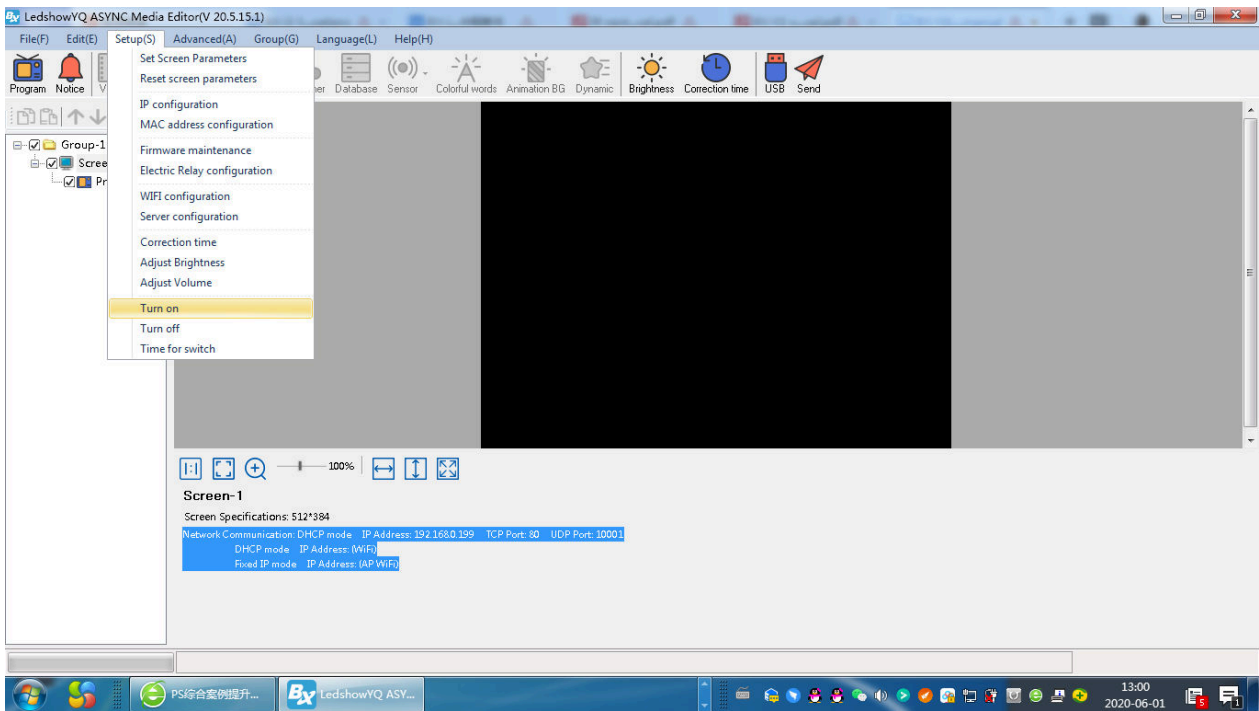
Relay function

Bx-vmf multifunction card and bx-y series multimedia player products can support sound transmission, multi-channel temperature and humidity, smoke and brightness sensor collection, etc. The multi-function card also supports multi-channel automatic switches: air conditioning temperature limit, fan dehumidification, large screen power supply, etc., which can be flexibly configured by users according to their needs.



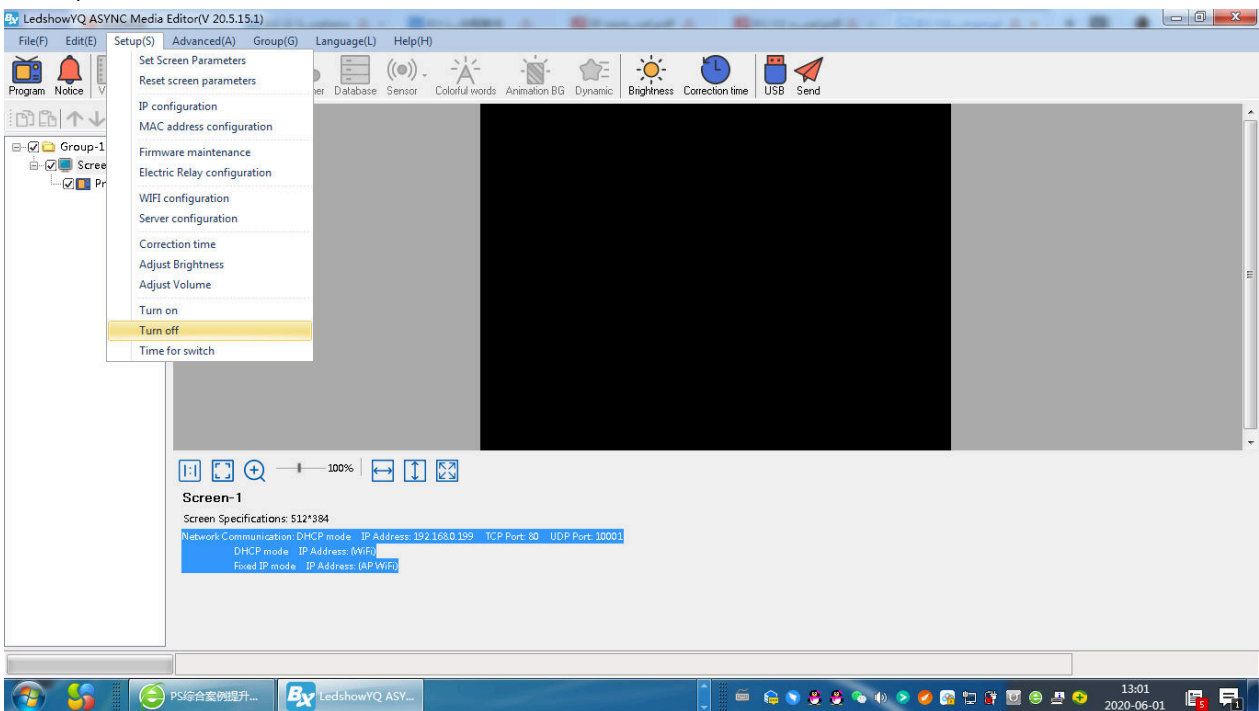
1. Open relay

Users can select the "power on" function under the "common" function under the menu bar, as shown in the following figure. The LED screen will turn on, and the external relay switch will turn on at the same time. (when the relay switch of bx-vmf multifunction card is turned on, you can hear several "dada" sounds from the multifunction card.)



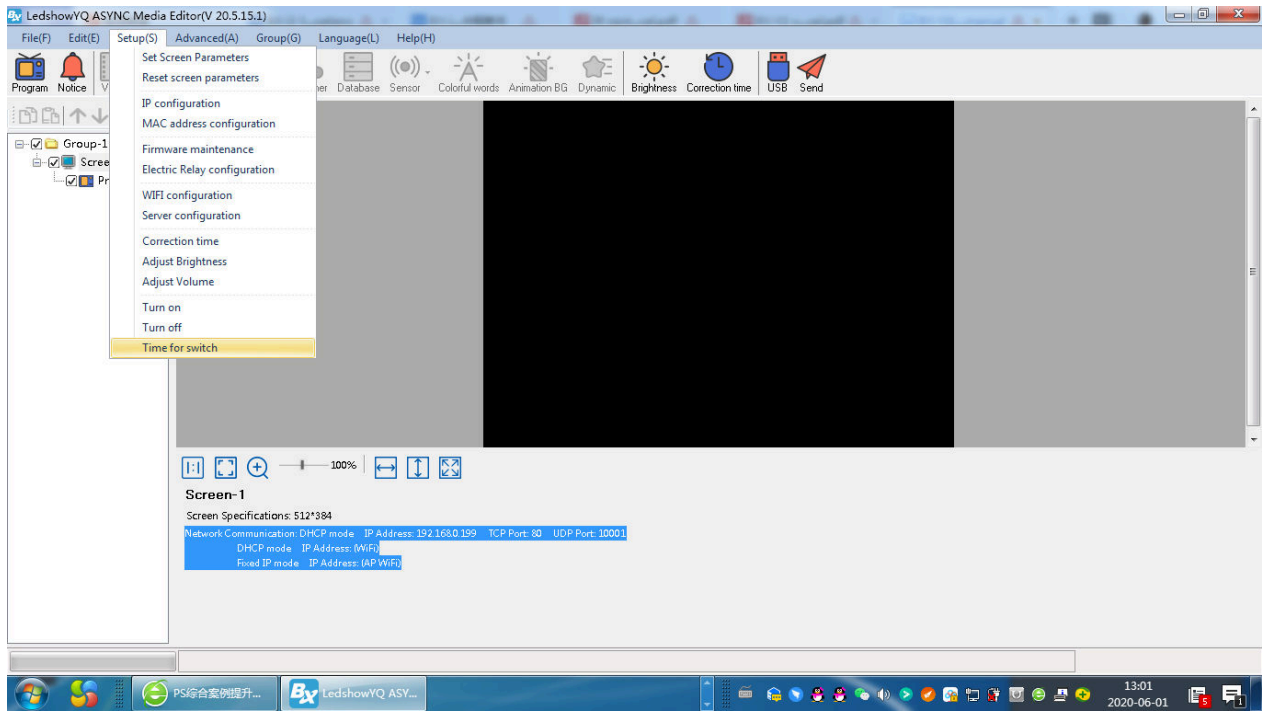
2. Close relay

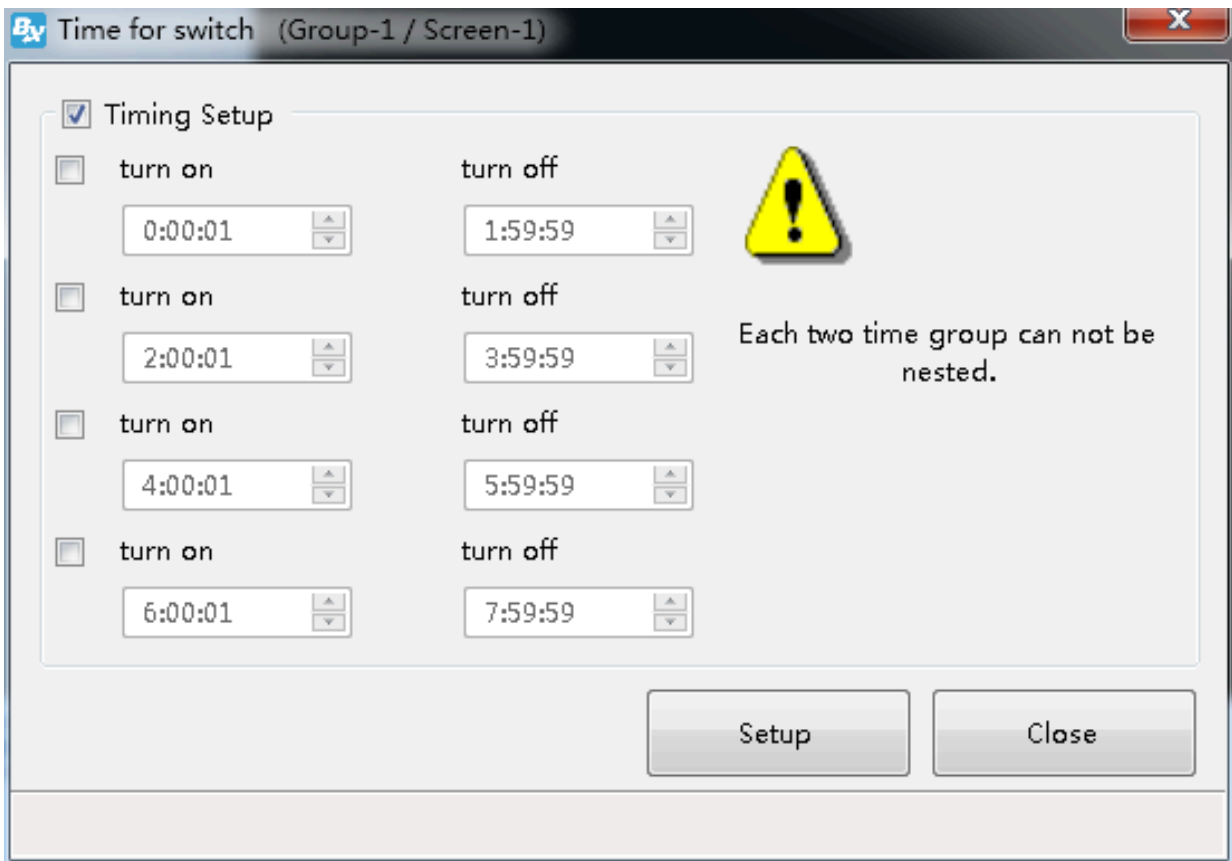
Users can select the "shutdown" function under the "common" function under the menu bar, as shown in the following figure. The LED screen will turn off, the screen will be black, and the external relay switch will be turned off at the same time. (when the relay switch of bx-vmf multifunction card is turned off, you can also hear several "dada" sounds from the multifunction card.)



3. Time for switch

Users can select "timing switch" function under "common" function in the menu bar, as shown in the figure below. The external relay switch will also synchronize with the power on / off time set by the user.





Note: please ensure that the power supply of bx-vmf multi-function card can be normally powered on (normally powered on). Try not to use the same socket for the power supply of the multi-function card and the air conditioner, fan or large screen power supply of the external relay switch, so as to avoid the unstable power supply of bx-vmf multi-function card caused by the power on or off of the air conditioner, fan or large screen after triggering the relay switch, which will affect the positive of the function card Often used.

Contact Us

Shanghai ONBON Technology Co.,ltd (Headquarters)

Address: 7 Floor, Tower 88, 1199#, North Qinzhou Road, Xuhui District, Shanghai City, China

Tel Phone: 086-21-64955136

Fax: 086-21-64955136

Website: www.onbonbx.com

ONBON (Jiangsu) Optoelectronic Industrial Co.,LTD

Address: 1299#, Fuchun Jiang Road, Kunshan City, Jiangsu Province, China

Sales Contacts

Tel: 0086-15921814956 0086-15800379719

Email: onbon@onbonbx.com

Second Development

Tel: 0512-66589212

Email: dev@onbonbx.com

iLEDCloud

Website: <http://www.iledcloud.com/>



Public Wechat



ONBON APP